

A. Powell / M. Turner /
S. Upton / L. Wisefield

Martin Turner's bass line on Sorrel

Wishbone Ash
from their 1973 album
Wishbone Four

$\text{♩} = 152$

Em G D C

6 D Em G D

12 C D Am **Verse**
Em

18 G D Em G D

24 Em G D Em

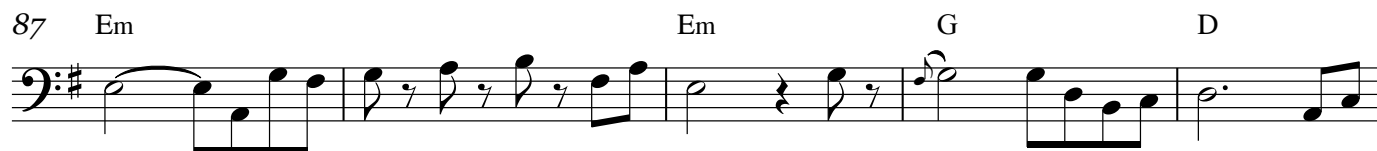
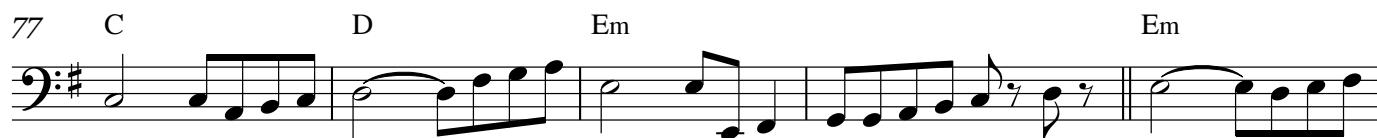
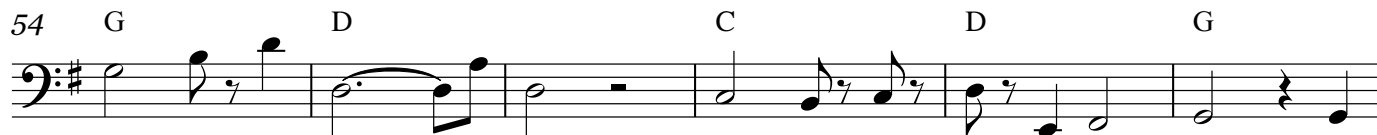
30 G D C D G

36 C D Am **Verse**
Em

42 G D Em G D

48 Em G D Em

Sorrel - 2



Interlude



Sorrel - 3

107 D C D Am

Verse

113 Em G D Em G

119 D Em G D

125 Em G D C D

Outro

131 G D/F# Em Em/D C D Am Am

138 D/A Em/A D/A Am D/A Em/A D/A

145 Am D/A Em/A D/A Am D/A Em/A

152 D/A Am D/A Em/A D/A Am D/A

159 Em/A D/A Am D/A Em/A D/A Am

Sorrel - 4

166

D/A Em/A D/A Am D/A Em/A D/A

173

Am D/A Em/A D/A Am

178

D/A Em/A D/A Em/A D/A

Fade out..