

-ANDY POWELL/MARTIN TURNER/  
TED TURNER/STEVE UPTON

MARTIN TURNER'S BASS SOLO ON

FROM WISHBONE ASH'S 1970 ALBUM  
WISHBONE ASH

# LADY WHISKEY

$\text{♩} = 164$  **E MIN**

BASS



**VERSE** **E MIN**



5



10

**A<sup>7</sup>**



15

**D** **INTERLUDE** **B MIN** **C**



20

**G** **A MIN** **B MIN** **C** **G** **D**



26

**E MIN** **E MIN**



32

©1970 MCA

TRANSCRIBED BY ARCELLUS SYKES - [WWW.SYKESTRANSSCRIPTION.COM](http://WWW.SYKESTRANSSCRIPTION.COM)

LADY WHISKEY - 2

VERSE E MIN

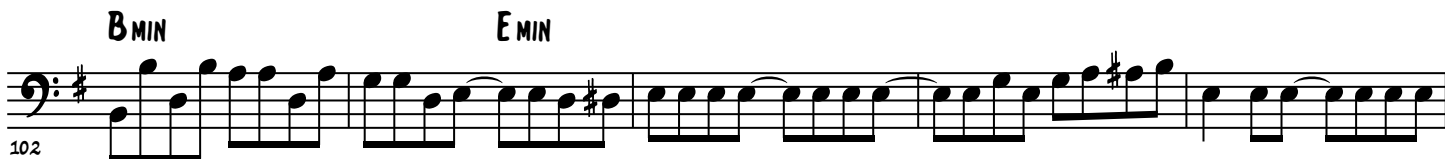
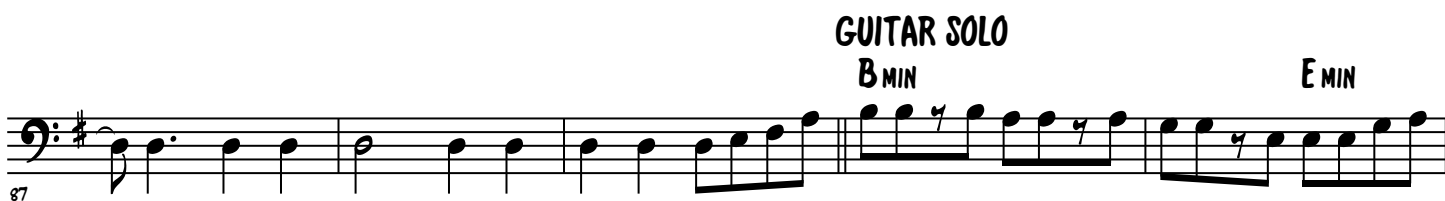


VERSE

E MIN



# LADY WHISKEY - 3



# LADY WHISKEY - 4

117

E MIN

Staff 117-121: Bass clef, key of D major (F#). Measures 117-121. Chord E MIN is indicated above measure 120.

122

G A E MIN

Staff 122-126: Bass clef, key of D major (F#). Measures 122-126. Chords G, A, and E MIN are indicated above measures 124, 125, and 126 respectively.

127

G A E MIN

Staff 127-131: Bass clef, key of D major (F#). Measures 127-131. Chords G, A, and E MIN are indicated above measures 128, 129, and 130 respectively.

132

Staff 132-136: Bass clef, key of D major (F#). Measures 132-136.

137

Staff 137-141: Bass clef, key of D major (F#). Measures 137-141.

142

A<sup>7</sup> E MIN

Staff 142-146: Bass clef, key of D major (F#). Measures 142-146. Chords A<sup>7</sup> and E MIN are indicated above measures 143 and 145 respectively.

147

G A

Staff 147-151: Bass clef, key of D major (F#). Measures 147-151. Chords G and A are indicated above measures 149 and 150 respectively.

152

E MIN G A E MIN

Staff 152-156: Bass clef, key of D major (F#). Measures 152-156. Chords E MIN, G, A, and E MIN are indicated above measures 153, 154, 155, and 156 respectively.

157

Staff 157-161: Bass clef, key of D major (F#). Measures 157-161.

LADY WHISKEY - 5

