

MARTIN TURNER'S BASS LINE ON
LADY JAY

FROM WISHBONE ASH'S 1974 ALBUM
THERE'S THE RUB

FADE IN
APPROX. 37"

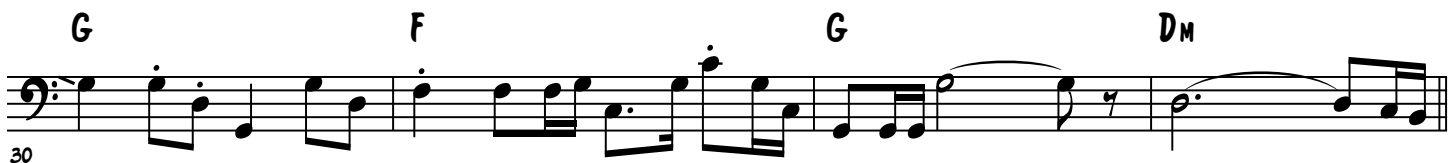
$\text{♩} = 69$
DRUMS



VERSE



VERSE



© 1974 MCA

TRANSCRIBED BY ARCELLUS SYKES - WWW.SYKESTRANSSCRIPTION.COM

INTERLUDE

LADY JAY - 2

Musical notation for the first line of the Interlude, measures 34-37. Chords: D_M, C, A_M, C, G, F, D_M.

Musical notation for the second line of the Interlude, measures 38-41. Chords: F, C, D_M, C, D_M, C.

Musical notation for the third line of the Interlude, measures 42-45. Chords: F, C, D_M, C, D_M, C. Time signature change to 3/4 at measure 44.

Musical notation for the fourth line of the Interlude, measures 46-49. Chords: G, D_M, C, A_M, F, C, D_M. Time signature change to 4/4 at measure 46.

VERSE

Musical notation for the first line of the Verse, measures 51-54. Chords: F, C, D_M, F, C, D_M, D_M, C, A_M. Time signature change to 2/4 at measure 53.

Musical notation for the second line of the Verse, measures 55-58. Chords: D_M, F, G, F, G, D_M. Time signature change to 4/4 at measure 55.

BRIDGE

Musical notation for the Bridge, measures 62-65. Chords: E_M, F, C, G, E_M. Time signature change to 4/4 at measure 62.

GUITAR SOLO

Musical notation for the Guitar Solo, measures 68-71. Chords: F, C, G, D_M, C, A_M.

LADY JAY - 3

73

Chords: C, G, F, C, Dm, C, Am

Measures 73-76: Bass line with eighth and sixteenth notes, including a triplet in measure 74.

OUTRO

77

Chords: C, G, F, C, Dm, F, C, Dm, F, C, Dm

Measures 77-80: Bass line with eighth and sixteenth notes, including a triplet in measure 78.

81

Chords: F, C, Dm, F, C, Dm, F, C, Dm, F, C, Dm

Measures 81-84: Bass line with eighth and sixteenth notes, including a triplet in measure 82.

85

Chords: F, C, Dm, F, C, Dm, F, C, Dm, F, C, Dm

Measures 85-88: Bass line with eighth and sixteenth notes, including a triplet in measure 86.

FADE OUT

89

Chords: F, C, Dm, F, C, Dm, F, C, Dm, F, C, Dm

Measures 89-92: Bass line with eighth and sixteenth notes, including a triplet in measure 90.