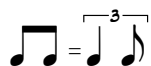


-ANDY POWELL/MARTIN TURNER/  
TED TURNER/STEVE UPTON

MARTIN TURNER'S BASS LINE ON

FROM WISHBONE ASH'S 1973 ALBUM  
*LIVE DATES*

# JAIL BAIT



♩=140

8

E<sup>7</sup>



## VERSE E<sup>7</sup>



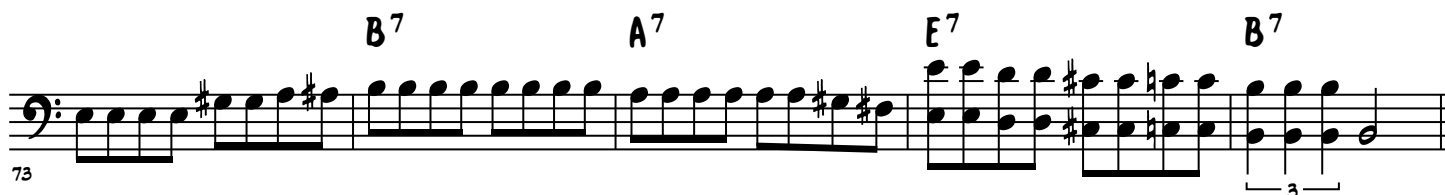
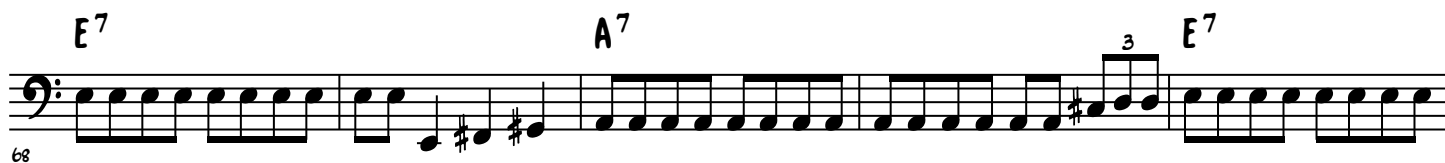
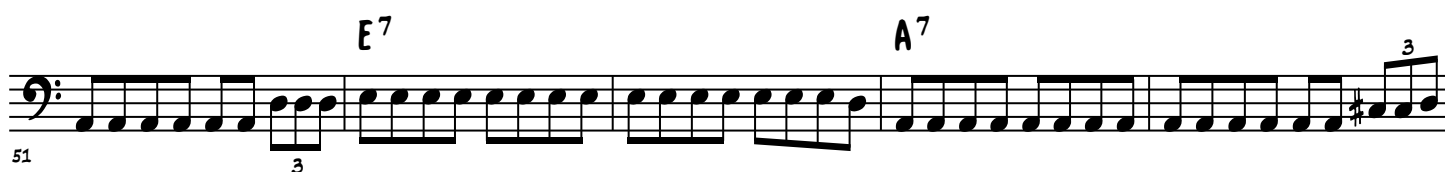
## VERSE E<sup>7</sup>



## GUITAR SOLO



# JAIL BAIT - 2



## JAIL BAIT - 3

TRADES  
E7

[illegible]

Musical notation for the bass line of 'The Sound of Silence'. The notation is on a single staff with a bass clef. It begins with a treble clef and a key signature of one sharp (F#). The melody starts with a quarter note G4, followed by a quarter note A4, and then a quarter note B4. This is followed by a triplet of eighth notes: C#5, D#5, and E5. The melody then moves to a series of eighth notes: F#5, G#5, A5, B5, C#6, D#6, E6, F#6, G#6, A6, B6, C#7, D#7, E7, F#7, G#7, A7, B7, C#8, D#8, E8, F#8, G#8, A8, B8, C#9, D#9, E9, F#9, G#9, A9, B9, C#10, D#10, E11, F#11, G#11, A11, B11, C#12, D#12, E13, F#13, G#13, A14, B14, C#15, D#15, E16, F#16, G#16, A17, B17, C#18, D#18, E19, F#19, G#19, A20, B20, C#21, D#21, E22, F#22, G#22, A23, B23, C#24, D#24, E25, F#25, G#25, A26, B26, C#27, D#27, E28, F#28, G#28, A29, B29, C#30, D#30, E31, F#31, G#31, A32, B32, C#33, D#33, E34, F#34, G#34, A35, B35, C#36, D#36, E37, F#37, G#37, A38, B38, C#39, D#39, E40, F#40, G#40, A41, B41, C#42, D#42, E43, F#43, G#43, A44, B44, C#45, D#45, E46, F#46, G#46, A47, B47, C#48, D#48, E49, F#49, G#49, A50, B50, C#51, D#51, E52, F#52, G#52, A53, B53, C#54, D#54, E55, F#55, G#55, A56, B56, C#57, D#57, E58, F#58, G#58, A59, B59, C#60, D#60, E61, F#61, G#61, A62, B62, C#63, D#63, E64, F#64, G#64, A65, B65, C#66, D#66, E67, F#67, G#67, A68, B68, C#69, D#69, E70, F#70, G#70, A71, B71, C#72, D#72, E73, F#73, G#73, A74, B74, C#75, D#75, E76, F#76, G#76, A77, B77, C#78, D#78, E79, F#79, G#79, A80, B80, C#81, D#81, E82, F#82, G#82, A83, B83, C#84, D#84, E85, F#85, G#85, A86, B86, C#87, D#87, E88, F#88, G#88, A89, B89, C#90, D#90, E91, F#91, G#91, A92, B92, C#93, D#93, E94, F#94, G#94, A95, B95, C#96, D#96, E97, F#97, G#97, A98, B98, C#99, D#99, E100, F#100, G#100, A101, B101, C#102, D#102, E103, F#103, G#103, A104, B104, C#105, D#105, E106, F#106, G#106, A107, B107, C#108, D#108, E109, F#109, G#109, A110, B110, C#111, D#111, E112, F#112, G#112, A113, B113, C#114, D#114, E115, F#115, G#115, A116, B116, C#117, D#117, E118, F#118, G#118, A119, B119, C#120, D#120, E121, F#121, G#121, A122, B122, C#123, D#123, E124, F#124, G#124, A125, B125, C#126, D#126, E127, F#127, G#127, A128, B128, C#129, D#129, E130, F#130, G#130, A131, B131, C#132, D#132, E133, F#133, G#133, A134, B134, C#135, D#135, E136, F#136, G#136, A137, B137, C#138, D#138, E139, F#139, G#139, A140, B140, C#141, D#141, E142, F#142, G#142, A143, B143, C#144, D#144, E145, F#145, G#145, A146, B146, C#147, D#147, E148, F#148, G#148, A149, B149, C#150, D#150, E151, F#151, G#151, A152, B152, C#153, D#153, E154, F#154, G#154, A155, B155, C#156, D#156, E157, F#157, G#157, A158, B158, C#159, D#159, E160, F#160, G#160, A161, B161, C#162, D#162, E163, F#163, G#163, A164, B164, C#165, D#165, E166, F#166, G#166, A167, B167, C#168, D#168, E169, F#169, G#169, A170, B170, C#171, D#171, E172, F#172, G#172, A173, B173, C#174, D#174, E175, F#175, G#175, A176, B176, C#177, D#177, E178, F#178, G#178, A179, B179, C#180, D#180, E181, F#181, G#181, A182, B182, C#183, D#183, E184, F#184, G#184, A185, B185, C#186, D#186, E187, F#187, G#187, A188, B188, C#189, D#189, E190, F#190, G#190, A191, B191, C#192, D#192, E193, F#193, G#193, A194, B194, C#195, D#195, E196, F#196, G#196, A197, B197, C#198, D#198, E199, F#199, G#199, A200, B200, C#201, D#201, E202, F#202, G#202, A203, B203, C#204, D#204, E205, F#205, G#205, A206, B206, C#207, D#207, E208, F#208, G#208, A209, B209, C#210, D#210, E211, F#211, G#211, A212, B212, C#213, D#213, E214, F#214, G#214, A215, B215, C#216, D#216, E217, F#217, G#217, A218, B218, C#219, D#219, E220, F#220, G#220, A221, B221, C#222, D#222, E223, F#223, G#223, A224, B224, C#225, D#225, E226, F#226, G#226, A227, B227, C#228, D#228, E229, F#229, G#229, A230, B230, C#231, D#231, E232, F#232, G#232, A233, B233, C#234, D#234, E235, F#235, G#235, A236, B236, C#237, D#237, E238, F#238, G#238, A239, B239, C#240, D#240, E241, F#241, G#241, A242, B242, C#243, D#243, E244, F#244, G#244, A245, B245, C#246, D#246, E247, F#247, G#247, A248, B248, C#249, D#249, E250, F#250, G#250, A251, B251, C#252, D#252, E253, F#253, G#253, A254, B254, C#255, D#255, E256, F#256, G#256, A257, B257, C#258, D#258, E259, F#259, G#259, A260, B260, C#261, D#261, E262, F#262, G#262, A263, B263, C#264, D#264, E265, F#265, G#265, A266, B266, C#267, D#267, E268, F#268, G#268, A269, B269, C#270, D#270, E271, F#271, G#271, A272, B272, C#273, D#273, E274, F#274, G#274, A275, B275, C#276, D#276, E277, F#277, G#277, A278, B278, C#279, D#279, E280, F#280, G#280, A281, B281, C#282, D#282, E283, F#283, G#283, A284, B284, C#285, D#285, E286, F#286, G#286, A287, B287, C#288, D#288, E289, F#289, G#289, A290, B290, C#291, D#291, E292, F#292, G#292, A293, B293, C#294, D#294, E295, F#295, G#295, A296, B296, C#297, D#297, E298, F#298, G#298, A299, B299, C#300, D#300, E301, F#301, G#301, A302, B302, C#303, D#303, E304, F#304, G#304, A305, B305, C#306, D#306, E307, F#307, G#307, A308, B308, C#309, D#309, E310, F#310, G#310, A311, B311, C#312, D#312, E313, F#313, G#313, A314, B314, C#315, D#315, E316, F#316, G#316, A317, B317, C#318, D#318, E319, F#319, G#319, A320, B320, C#321, D#321

Musical notation for the bass line of 'The Rose Tree'. The notation is on a single staff with a bass clef. It begins with a treble clef and a key signature of one flat (B-flat). The melody consists of a series of eighth and sixteenth notes, with some measures containing triplets. The notation is written in a style that includes a treble clef and a key signature of one flat (B-flat). The melody consists of a series of eighth and sixteenth notes, with some measures containing triplets. The notation is written in a style that includes a treble clef and a key signature of one flat (B-flat). The melody consists of a series of eighth and sixteenth notes, with some measures containing triplets.

## VERSE

[illegible]

Musical notation for the bass line of 'E7'. The notation is on a single staff with a bass clef. It begins with a key signature of one flat (B-flat) and a time signature of 7/8. The melody consists of eighth and sixteenth notes, with some triplets indicated by a '3' over the notes. The piece ends with a double bar line.

103 3 3 3

RIT.

108

The musical notation for the bass line of 'The Rose Tree' is shown on a single staff. It begins with a bass clef and a key signature of one sharp (F#). The melody consists of a series of eighth notes: G2, A2, B2, C3, D3, E3, F3, G3, followed by a half note G3. The piece concludes with a double bar line.