

-ANDY POWELL/MARTIN TURNER/
TED TURNER/STEVE UPTON

MARTIN TURNER'S BASS LINE ON

FROM WISHBONE ASH'S 1972 ALBUM
ARGUS

THE KING WILL COME



FADE IN (APPROX. :20)



7



13



19



25



30



35

THE KING WILL COME - 2

40

D MIN F G D MIN F E MIN VERSE D MIN

45

G D C G C D MIN G

50

D MIN C G D MIN G F G

56

D MIN C G/B A MIN D MIN G F G D MIN

61

BRIDGE C G/B A MIN F E MIN C A MIN G F E MIN

68

C A SUS A MIN D MIN F D MIN C

73

D MIN F G A MIN F G

78

E MIN F G A MIN GUITAR SOLO D MIN F G

THE KING WILL COME - 3

83

D MIN F E MIN D MIN F G

87

D MIN F E MIN D MIN F G D MIN F

92

E MIN D MIN F G D MIN F

96

E MIN D MIN F G D MIN F E MIN

101

D MIN F G D MIN F E MIN

105

D MIN F E MIN D MIN F E MIN

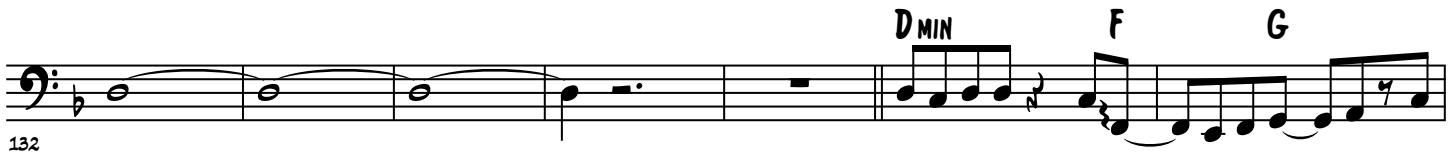
109

INTERLUDE

D MIN F E MIN D MIN 4 D MIN

117

THE KING WILL COME - 4



THE KING WILL COME - 5

171

Chord progression for measures 171-175: D MIN, F, G, D MIN, F, E MIN, D MIN, F. The notation is in bass clef with a key signature of one flat (Bb). Measure 171 contains a D MIN chord and an eighth-note melody. Measure 172 contains an F chord and a quarter-note melody. Measure 173 contains a G chord and a quarter-note melody. Measure 174 contains a D MIN chord and a quarter-note melody. Measure 175 contains an F chord and a quarter-note melody.

176

Chord progression for measures 176-180: G, F, E MIN, D MIN, D MIN. The notation is in bass clef with a key signature of one flat (Bb). Measure 176 contains a G chord and a half-note melody. Measure 177 contains an F chord and a quarter-note melody. Measure 178 contains an E MIN chord and a quarter-note melody. Measure 179 contains a D MIN chord and a half-note melody. Measure 180 contains a D MIN chord and a quarter-note melody.