

# DIRTY SHOES

## VERSE

♩=142

BASS

..FADE IN

C<sup>7</sup>

C<sup>7</sup>

5

3

3

10

3

3

14

C<sup>7</sup>

A<sup>b</sup>

B<sup>b</sup>

C<sup>7</sup>

The bass line for the Verse of 'Dirty Shoes' is written in bass clef with a key signature of one flat (Bb) and a 4/4 time signature. The tempo is marked as quarter note = 142. The line begins with a 'FADE IN' instruction. The first staff contains measures 1-4, with a C7 chord above measure 4. The second staff contains measures 5-8, with a '5' below measure 5 and a '3' below measure 8. The third staff contains measures 9-12, with a G7 chord above measure 10 and Ab and Bb chords above measures 11 and 12 respectively. The fourth staff contains measures 13-16, with C7 chords above measures 13 and 16, and Ab and Bb chords above measures 14 and 15 respectively. Measure numbers 5, 10, and 14 are indicated at the start of their respective staves.

## CHORUS

C<sup>7</sup>

19

F<sup>7</sup>

23

C<sup>7</sup>

G<sup>7</sup>

C<sup>7</sup>

27

The bass line for the Chorus of 'Dirty Shoes' is written in bass clef with a key signature of one flat (Bb) and a 4/4 time signature. The first staff contains measures 19-22, with a C7 chord above measure 20. The second staff contains measures 23-26, with an F7 chord above measure 24 and a C7 chord above measure 26. The third staff contains measures 27-30, with G7 and C7 chords above measures 28 and 30 respectively. Measure numbers 19, 23, and 27 are indicated at the start of their respective staves.

DIRTY SHOES - 2

GUITAR SOLO

C<sup>7</sup>



31

G<sup>7</sup>



36

A<sup>b</sup>

B<sup>b</sup>

C<sup>7</sup>

A<sup>b</sup>



41

PIANO SOLO

B<sup>b</sup>

C<sup>7</sup>

C<sup>7</sup>



45

F<sup>7</sup>



50

C<sup>7</sup>

G<sup>7</sup>

F<sup>7</sup>

C<sup>7</sup>



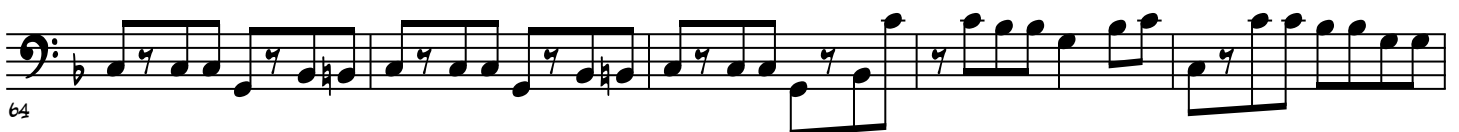
54

OUTRO

C<sup>7</sup>



59



64

# DIRTY SHOES - 3

