

-WINWOOD/CAPALDI

STEVE WINWOOD'S BASS LINE ON

FREEDOM RIDER

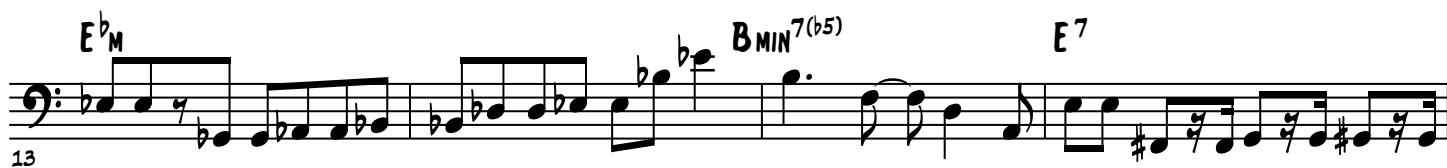
♩ = 108

TUNE LOW STRING DOWN 1 STEP TO 'D'

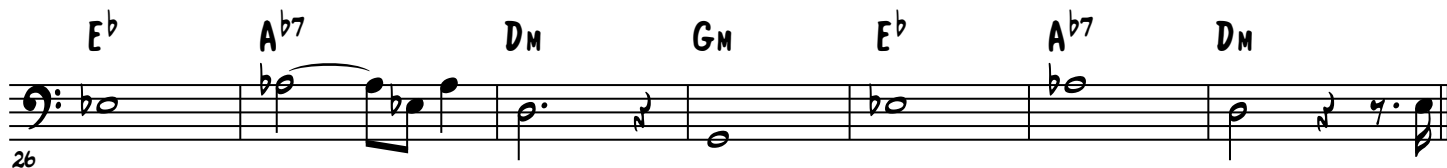
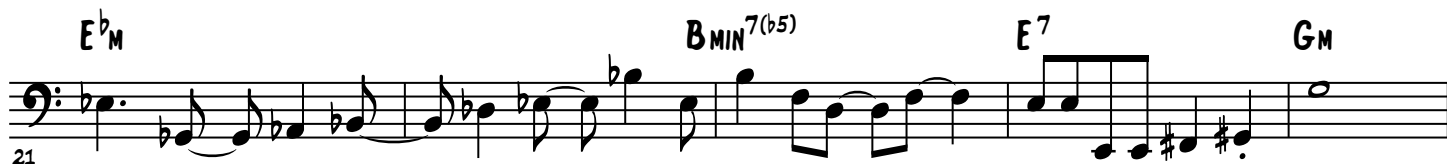
FROM TRAFFIC'S 1970 ALBUM

JOHN BARLEYCORN MUST DIE

VERSE



CHORUS



VERSE



FREEDOM RIDER - 2

42

G/A

CHORUS

45

E^bM B^{MIN}7(b5) E⁷ G^M

50

E^b A^{b7} D^M G^M E^b A^{b7}

BRIDGE

56

D^M C^M D^M G^M

61

C^M D^M E^M E⁷

FLUTE SOLO

65

A^M G/A

69

E^bM B^{MIN}7(b5) E⁷

73

A^M G/A

FREEDOM RIDER - 3

77 E^b_M $B_{MIN}^{7(b5)}$ E^7

(SOLO CONT.)

81 A_M G/A

85 E^b_M $B_{MIN}^{7(b5)}$ E^7

89 A_M G/A

93 E^b_M $B_{MIN}^{7(b5)}$ E^7 G_M

98 E^b A^{b7} D_M G_M E^b A^{b7} D_M

VERSE

105 A_M G/A

109 E^b_M $B_{MIN}^{7(b5)}$ E^7

FREEDOM RIDER - 4

Am G/A

113

CHORUS

E^bM B^{MIN}7(b5) E⁷

117

G^M E^b A^b7 D⁷

121

OUTRO

G^M E^b A^b7 D⁷

125

G^M E^b A^b7 D⁷

129

G^M E^b A^b7 D⁷

133

G^M E^b A^b7

137

D⁷ G^M E^b

140

FREEDOM RIDER - 5

143

A^{b7} D⁷ G^M

The musical notation shows the bass line for the third measure of the first system. It begins with a bass clef and a key signature of one flat (B-flat). The first measure is marked with a chord symbol 'A^{b7}' and contains a half note B-flat, a quarter note D-flat, and a quarter note E-flat. The second measure is marked with a chord symbol 'D⁷' and contains a half note D, a quarter note E, and a quarter note F-sharp. The third measure is marked with a chord symbol 'G^M' and contains a half note G, a quarter note A, and a quarter note B. The notation includes various musical symbols such as clefs, key signatures, chord symbols, and note values.

146

Handwritten musical notation for the bass line of 'The Girl on the Train'. The notation is on a single staff with a bass clef. The key signature has one flat (B-flat). The tempo is marked '146'. The notation includes various note values, rests, and accidentals. Above the staff, there are handwritten chord symbols: E^b, A^{b7}, and D⁷. The notation ends with a double bar line.