

-ROSSI/PARFITT

ALAN LANCASTER'S BASS LINE ON

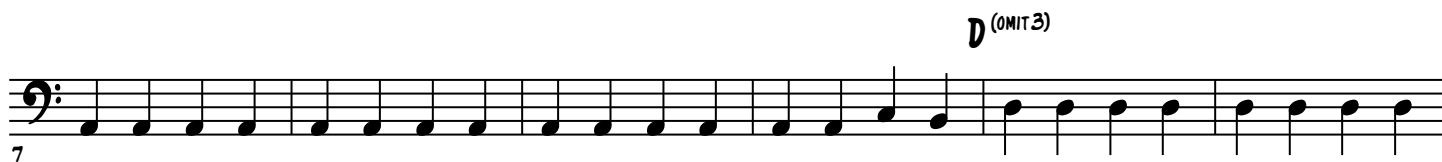
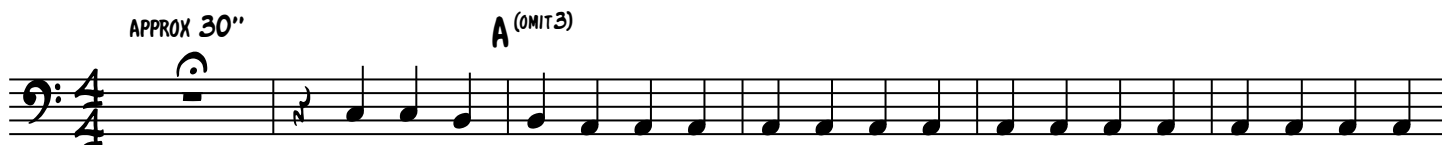
OH BABY

FROM STATUS QUO'S 1972 ALBUM

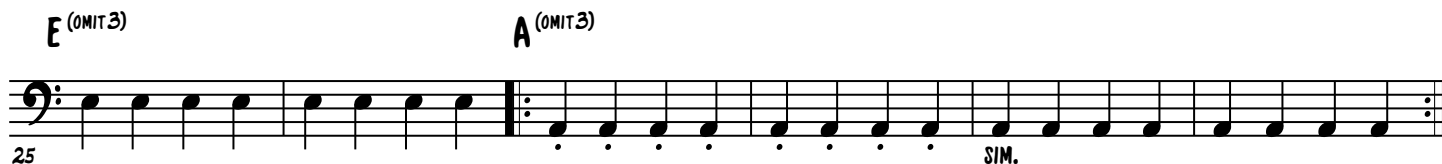
PILED RIVER

♩ = 218

GUITAR FADES IN
APPROX 30"



VERSE



OH BABY - 2

VERSE

A (OMIT 3) E (OMIT 3) A (OMIT 3)

43

1. 2. D (OMIT 3)

49

A (OMIT 3) B (OMIT 3)

55

C (OMIT 3) D (OMIT 3) A (OMIT 3) E (OMIT 3)

61 SIM.

GUITAR SOLO

A (OMIT 3)

67

D (OMIT 3) A (OMIT 3)

73

E (OMIT 3) D (OMIT 3)

79

BRIDGE - PLAY 4x

A (OMIT 3) E (OMIT 3) Dm

85

OH BABY - 3

INTERLUDE

1-3. 4. A (OMIT 3)

91

D (OMIT 3)

97

A (OMIT 3)

103

B (OMIT 3) D (OMIT 3) E (OMIT 3) A (OMIT 3)

109

VERSE

E (OMIT 3) A (OMIT 3)

115

1. 2. D (OMIT 3)

121

A (OMIT 3) B (OMIT 3)

127

C (OMIT 3) D (OMIT 3) A (OMIT 3) E (OMIT 3)

133 SIM.

OH BABY - 4

A (OMIT 3) **D** (OMIT 3)

1. 2.

139

A (OMIT 3)

145

The image shows a single staff of music in bass clef. The first three measures each contain four eighth notes, all beamed together. The notes are G2, F2, E2, and D2. The fourth measure contains eight eighth notes, also beamed together, with the notes G2, F2, E2, D2, C2, B1, A1, and G1. The staff is numbered 145 at the beginning.

151 **B**^(OMIT 3) **C**^(OMIT 3) **SIM.**

D (omit 3) **A** (omit 3) **E** (omit 3)

155 156 157

OUTRO CONT.

D_M

160

BEGIN LONG FADEOUT 5TH X

This musical notation is for the Dm chord section of 'The Sound of Silence'. It begins at measure 160. The notation is in bass clef and consists of a single line of music. The first three measures each contain four eighth notes, starting on D2 and ascending to G2. The fourth measure contains a triplet of eighth notes (F2, G2, A2) followed by a single eighth note (B1). The fifth measure contains a triplet of eighth notes (A2, B2, C3) followed by a single eighth note (D3). The section ends with a double bar line and repeat dots. Below the staff, the text 'BEGIN LONG FADEOUT 5TH X' is written.

OUTRO CONT.

D_M

164

REPEAT & FADE