

GEDDY LEE'S BASS LINE ON
BY-TOR & THE SNOW DOG

-LEE, LIFESON

FROM RUSH'S 1975 ALBUM

FLY BY NIGHT

I: AT THE TOWERS OF HADES

♩ = 164



II: ACROSS THE STYX



BY-TOR & THE SNOW DOG - 2

35

A D A G D/F# A/E D A E

40

C F G F G D

45

C F G F G D

III: OF THE BATTLE

A. CHALLENGE AND DEFIANCE

49

E A G G A E

54

A B G A E A

59

C G C G A C G

64

C G A E A E C F

68

C F D G D G D G

BY-TOR & THE SNOW DOG - 3

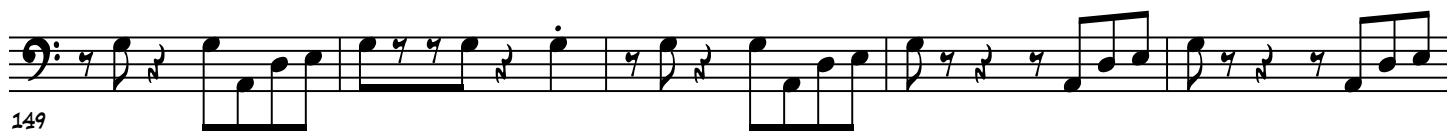
D G E⁷

72 76 80 85 90 95 100 105

BY-TOR & THE SNOW DOG - 4



BY-TOR & THE SNOW DOG - 5

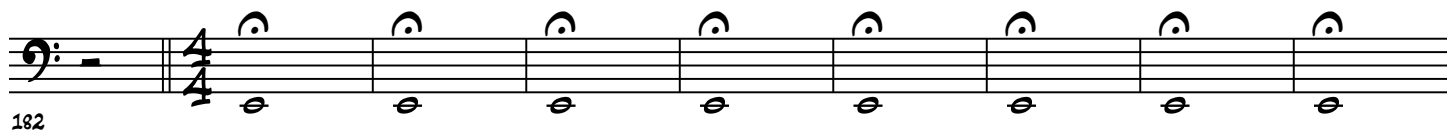


III B. 7/4 WAR FUROR



III C. AFTERMATH

LONG SUSTAINS
GUITAR SWELLS



♩ = 102

III D. HYMN OF TRIUMPH



BY-TOR & THE SNOW DOG - 6



IV: EPILOGUE



BY-TOR & THE SNOW DOG - 7

227

G D/F# A/E D A D A

232

G D/F# A/E D A E C F G

237

F G D C F G

242

F G D F G D F G D

247

F G D F G

251

F G F G D