

-RORY GALLAGHER

GERRY McAVOY'S BASS LINE ON
CRADLE ROCK

FROM RORY GALLAGHER'S 1973 ALBUM
TATTOO

♩ = 102



VERSE



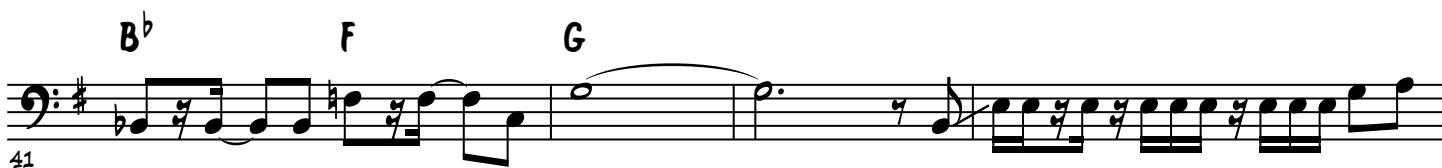
CRADLE ROCK - 2

VERSE

E⁷



BRIDGE



CRADLE ROCK - 3



GUITAR SOLO

E⁷



INTERLUDE

E⁷

VOCAL ENTERS



(SOLO CONT.)

E⁷

75

Musical notation for the bass line of 'The Rose Tree'. The key signature is one sharp (F#). The melody consists of eighth and sixteenth notes, with some rests. The notation is written on a single staff.

83

87

C G B^b F C G

Musical notation for the bass line of 'The Rose Tree'. The key signature is one sharp (F#). The notation shows a sequence of chords: C, G, B^b, F, C, G. The melody consists of eighth and quarter notes, with some notes beamed together. The bass line is written on a single staff.

90

B^b F G E⁷

Musical notation for the bass line of 'The Sound of Silence'. The notation is on a single staff with a bass clef and a key signature of one sharp (F#). The tempo is marked '90'. The chord progression is indicated above the staff: B^b, F, G, and E⁷. The melody consists of eighth and sixteenth notes, with a long note in the G measure.

94 

97 

VERSE

E⁷

100

CRADLE ROCK - 5

103

1. 2.

VERSE

E⁷

106

109

112

GUITAR SOLO/OUTRO

E⁷

115

118

121

124

CRADLE ROCK - 6

