

GERRY MCAVOY'S BASS LINE ON

JINXED

FROM RORY GALLAGHER'S 1982 ALBUM

JINX

♩ = 106

FADE IN

3

F^bM⁷

B^bM^b1^b/9



GUITAR

VERSE

B^bM^b1^b/9



8

1.

2.

B^bM^b1^b/9



13



18

VERSE

F^bM⁷

B^bM^b1^b/9

F^bM⁷

B^bM^b1^b/9



23



29



34

JINXED - 2

39  **Fm⁷**

GUITAR SOLO

[illegible]

50 

55

55

Musical notation for the bass line of 'The Rose Tree'. The key signature is three flats (B-flat, E-flat, A-flat). The notation includes a treble clef, a key signature of three flats, and a tempo marking of 60. The melody consists of eighth and quarter notes, with a final measure marked with a fermata. The chord E-flat major 7 (Ebm7) is indicated above the final measure.

65 

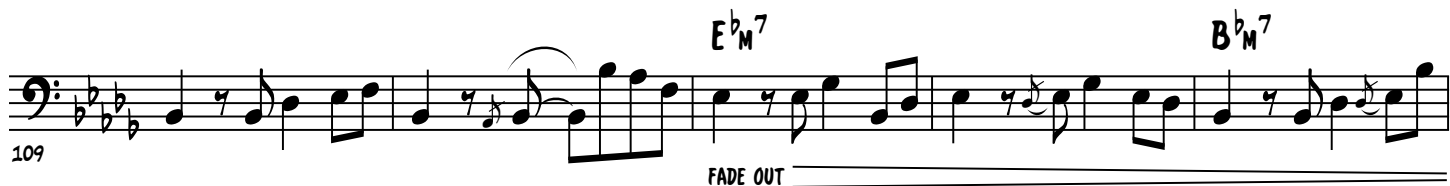
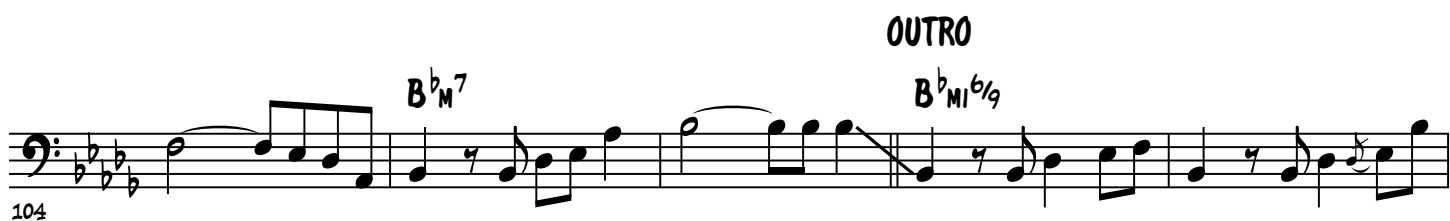
BRIDGE

70 $E^b M^7$ $B^b M^7$

VERSE

Musical notation for Example 7-10, showing a bass staff with chords $E^b M^7$, D^b , F^7 , and $B^b M^{b9}$. The notation includes a key signature change from two flats to one flat and a measure rest.

JINKED - 3



JINKED - 4

B^bM⁷

119

This musical staff contains measures 119 through 122. It is written in bass clef with a key signature of three flats (B-flat, E-flat, A-flat). The time signature is 4/4. The notation consists of eighth and quarter notes, with some beamed eighth notes. A double bar line is at the end of measure 122.

E^bM⁷ **B^bM⁷**

123

This musical staff contains measures 123 through 126. It is written in bass clef with a key signature of three flats (B-flat, E-flat, A-flat). The time signature is 4/4. The notation consists of eighth and quarter notes, with some beamed eighth notes. A double bar line is at the end of measure 126.