

GERRY MCAVOY'S BASS LINE ON
SEVENTH SON OF A SEVENTH SON

FROM RORY GALLAGHER'S 1973 ALBUM

BLUEPRINT

♩ = 136

VERSE

INTRO

BASS

OUT OF TIME (APPROX 48")

The image displays a musical score for the bass line of 'Seventh Son of a Seventh Son'. It begins with an 'INTRO' section, marked 'OUT OF TIME (APPROX 48")', followed by a 'VERSE' section. The notation is written on a single bass staff in 4/4 time, with a tempo of 136 beats per minute. The key signature has one flat (B-flat). The score is divided into measures by bar lines, with measure numbers 7, 12, 17, 22, 27, 32, and 37 indicated at the start of their respective lines. Chord symbols (C and D) are placed above the staff to indicate harmonic structure. The bass line features a mix of eighth and sixteenth notes, often beamed together, and includes some triplets. The piece concludes with a double bar line at measure 42.

2
INTERLUDE

SEVENTH SON OF A SEVENTH SON

42

Chords: D^M, B^b, A⁷, D^M, D^M

49

Chords: B^b, A⁷, D^M, VERSE, E

55

Chords: D, E

60

Chords: D, E

64

Chords: D, E

68

Chords: D, E, D

73

Chords: E, D

77

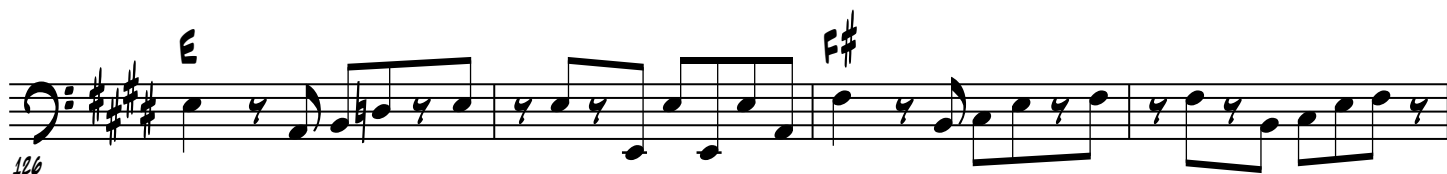
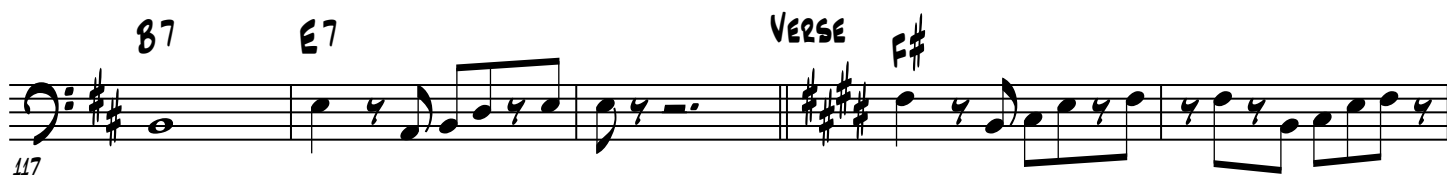
Chords: E, D

82

Chords: E, D, E



KEYBOARD SOLO





SEVENTH SON OF A SEVENTH SON
INTERLUDE

5

166

E F#m D C#7

Staff 166-170: Bass clef, key of D major (F#, C#, G, D). Measure 166: E4 quarter, F#4 quarter, G4 quarter, A4 quarter. Measure 167: B4 quarter, C#5 quarter, B4 quarter, A4 quarter. Measure 168: G4 quarter, F#4 quarter, E4 quarter, D4 quarter. Measure 169: D4 half. Measure 170: D4 half.

170

F# F#m D C#7

Staff 170-174: Bass clef, key of D major. Measure 170: F#4 quarter, G4 quarter, A4 quarter, B4 quarter. Measure 171: C#5 quarter, B4 quarter, A4 quarter, G4 quarter. Measure 172: F#4 quarter, E4 quarter, D4 quarter, C#4 quarter. Measure 173: D4 half. Measure 174: D4 half.

178

GT. SOLO

F# F#

Staff 178-182: Bass clef, key of D major. Measure 178: F#4 quarter, G4 quarter, A4 quarter, B4 quarter. Measure 179: C#5 quarter, B4 quarter, A4 quarter, G4 quarter. Measure 180: F#4 quarter, E4 quarter, D4 quarter, C#4 quarter. Measure 181: D4 half. Measure 182: D4 half.

183

Staff 183-187: Bass clef, key of D major. Measure 183: F#4 quarter, G4 quarter, A4 quarter, B4 quarter. Measure 184: C#5 quarter, B4 quarter, A4 quarter, G4 quarter. Measure 185: F#4 quarter, E4 quarter, D4 quarter, C#4 quarter. Measure 186: D4 half. Measure 187: D4 half.

187

Staff 187-191: Bass clef, key of D major. Measure 187: F#4 quarter, G4 quarter, A4 quarter, B4 quarter. Measure 188: C#5 quarter, B4 quarter, A4 quarter, G4 quarter. Measure 189: F#4 quarter, E4 quarter, D4 quarter, C#4 quarter. Measure 190: D4 half. Measure 191: D4 half.

191

Staff 191-195: Bass clef, key of D major. Measure 191: F#4 quarter, G4 quarter, A4 quarter, B4 quarter. Measure 192: C#5 quarter, B4 quarter, A4 quarter, G4 quarter. Measure 193: F#4 quarter, E4 quarter, D4 quarter, C#4 quarter. Measure 194: D4 half. Measure 195: D4 half.

195

OUTRO

F#

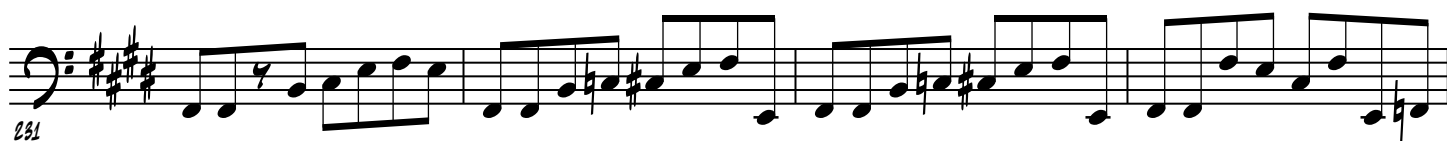
Staff 195-199: Bass clef, key of D major. Measure 195: F#4 quarter, G4 quarter, A4 quarter, B4 quarter. Measure 196: C#5 quarter, B4 quarter, A4 quarter, G4 quarter. Measure 197: F#4 quarter, E4 quarter, D4 quarter, C#4 quarter. Measure 198: D4 half. Measure 199: D4 half.

199

Staff 199-203: Bass clef, key of D major. Measure 199: F#4 quarter, G4 quarter, A4 quarter, B4 quarter. Measure 200: C#5 quarter, B4 quarter, A4 quarter, G4 quarter. Measure 201: F#4 quarter, E4 quarter, D4 quarter, C#4 quarter. Measure 202: D4 half. Measure 203: D4 half.

203

Staff 203-207: Bass clef, key of D major. Measure 203: F#4 quarter, G4 quarter, A4 quarter, B4 quarter. Measure 204: C#5 quarter, B4 quarter, A4 quarter, G4 quarter. Measure 205: F#4 quarter, E4 quarter, D4 quarter, C#4 quarter. Measure 206: D4 half. Measure 207: D4 half.



FADE OUT..

