

CROSSROADER

FROM MOUNTAIN'S 1973 ALBUM *THE BEST OF..*

$\text{♩} = 94$ **A 7(#9)**

BASS GT

The introduction consists of five measures of music in 4/4 time. The bass line starts with a half note G2, followed by eighth notes A2, B2, and C3. The next measure has eighth notes D2, E2, and F2. The third measure has eighth notes G2, A2, and B2. The fourth measure has eighth notes C3, D3, and E3. The fifth measure has eighth notes F3, G3, and A3. The line ends with a double bar line.

VERSE **A 7(#9)** **D 7(#9)**

The first part of the verse consists of five measures. The first measure has a half note G2. The second measure has eighth notes A2, B2, and C3. The third measure has eighth notes D2, E2, and F2. The fourth measure has eighth notes G2, A2, and B2. The fifth measure has eighth notes C3, D3, and E3. The line ends with a double bar line.

A 7(#9)

The second part of the verse consists of five measures. The first measure has eighth notes G2, A2, and B2. The second measure has eighth notes C3, D3, and E3. The third measure has eighth notes F3, G3, and A3. The fourth measure has eighth notes B3, C4, and D4. The fifth measure has eighth notes E4, F4, and G4. The line ends with a double bar line.

E 7(#9) **D**

The third part of the verse consists of five measures. The first measure has eighth notes G2, A2, and B2. The second measure has eighth notes C3, D3, and E3. The third measure has eighth notes F3, G3, and A3. The fourth measure has eighth notes B3, C4, and D4. The fifth measure has eighth notes E4, F4, and G4. The line ends with a double bar line.

A 7(#9) **VERSE** **A 7(#9)**

The fourth part of the verse consists of five measures. The first measure has eighth notes G2, A2, and B2. The second measure has eighth notes C3, D3, and E3. The third measure has eighth notes F3, G3, and A3. The fourth measure has eighth notes B3, C4, and D4. The fifth measure has eighth notes E4, F4, and G4. The line ends with a double bar line.

The fifth part of the verse consists of five measures. The first measure has eighth notes G2, A2, and B2. The second measure has eighth notes C3, D3, and E3. The third measure has eighth notes F3, G3, and A3. The fourth measure has eighth notes B3, C4, and D4. The fifth measure has eighth notes E4, F4, and G4. The line ends with a double bar line.

D 7(#9)

The sixth part of the verse consists of five measures. The first measure has eighth notes G2, A2, and B2. The second measure has eighth notes C3, D3, and E3. The third measure has eighth notes F3, G3, and A3. The fourth measure has eighth notes B3, C4, and D4. The fifth measure has eighth notes E4, F4, and G4. The line ends with a double bar line.

CROSSROADER - 2

36 **A 7(#9)**

Musical staff 36-40 in bass clef. Staff 36 starts with a sharp sign and contains eighth and quarter notes. Staff 37 continues with eighth and quarter notes. Staff 38 features a dotted quarter note followed by eighth notes. Staff 39 has eighth notes. Staff 40 ends with a quarter note.

41 **E 7(#9)** **D** **A 7(#9)**

Musical staff 41-45 in bass clef. Staff 41 starts with a quarter note and eighth notes. Staff 42 has eighth notes. Staff 43 has eighth notes. Staff 44 has eighth notes. Staff 45 has eighth notes.

46 **GUITAR SOLO** **A 7(#9)**

Musical staff 46-50 in bass clef. Staff 46 has eighth notes. Staff 47 has eighth notes. Staff 48 has eighth notes. Staff 49 has eighth notes. Staff 50 has eighth notes.

51 **D 7(#9)**

Musical staff 51-55 in bass clef. Staff 51 has eighth notes. Staff 52 has eighth notes. Staff 53 has eighth notes. Staff 54 has eighth notes. Staff 55 has eighth notes.

56 **A 7(#9)**

Musical staff 56-60 in bass clef. Staff 56 has eighth notes. Staff 57 has eighth notes. Staff 58 has eighth notes. Staff 59 has eighth notes. Staff 60 has eighth notes.

61 **E 7(#9)** **D** **A 7(#9)**

Musical staff 61-65 in bass clef. Staff 61 has eighth notes. Staff 62 has eighth notes. Staff 63 has eighth notes. Staff 64 has eighth notes. Staff 65 has eighth notes.

66 **VERSE** **A 7(#9)**

Musical staff 66-70 in bass clef. Staff 66 has eighth notes. Staff 67 has eighth notes. Staff 68 has eighth notes. Staff 69 has eighth notes. Staff 70 has eighth notes.

71

Musical staff 71-75 in bass clef. Staff 71 has eighth notes. Staff 72 has eighth notes. Staff 73 has eighth notes. Staff 74 has eighth notes. Staff 75 has eighth notes.

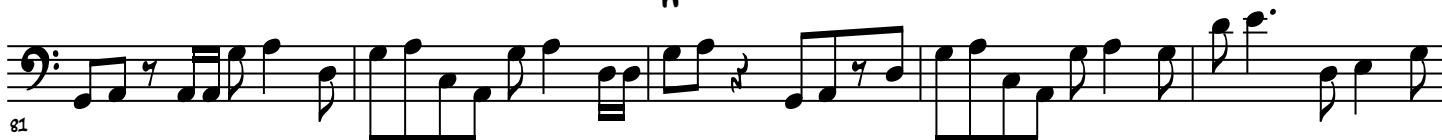
CROSSROADER - 3

D 7(#9)



A 7(#9)

E 7(#9)



D

A 7(#9)



E 7(#9)

D

C



RUBATO

