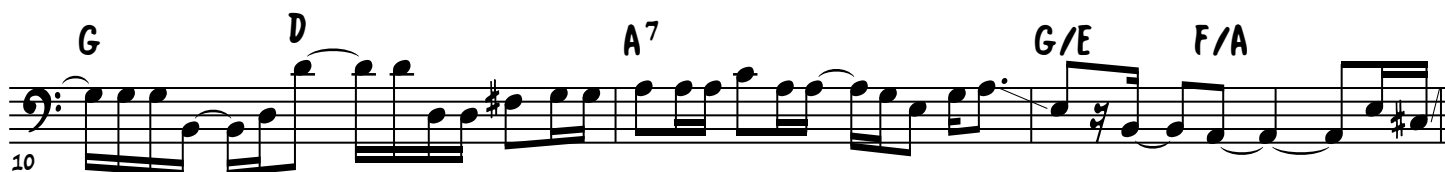
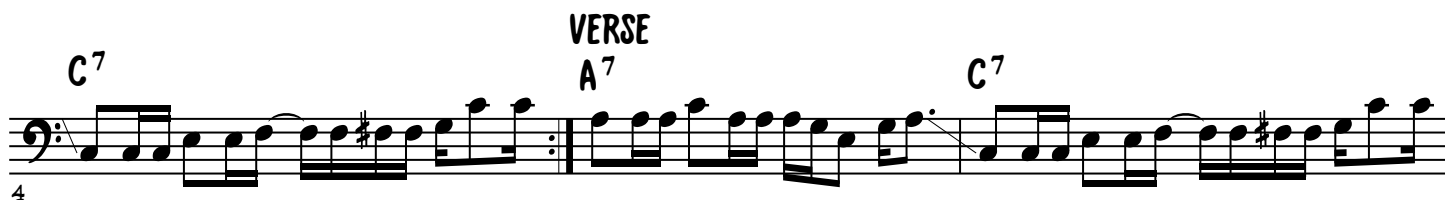


-WILSON

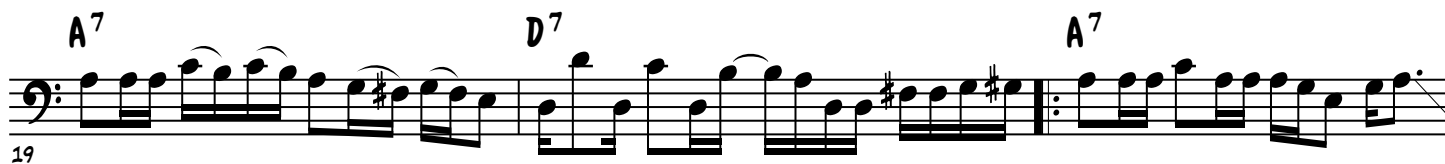
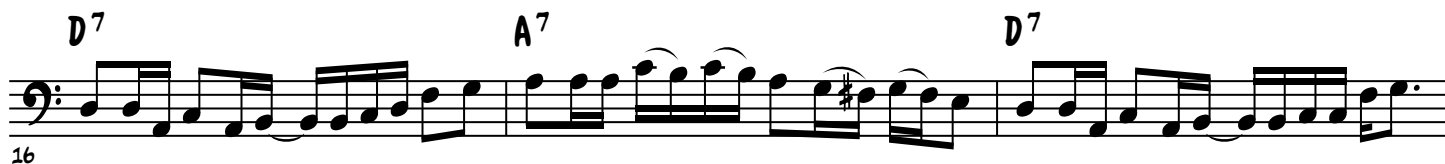
BOB DAISLEY'S BASS LINE ON

SHE'S SO HARD TO SHAKE

FROM KAHVAS JUTE'S 1971 ALBUM
WIDE OPEN



CHORUS



SHE'S SO HARD TO SHAKE - 2

VERSE

22

C⁷ A⁷ C⁷

25

A⁷ C⁷ A⁷

28

G D A⁷ G/E F/A

CHORUS

31

A⁷ D⁷ A⁷

34

D⁷ A⁷ D⁷

37

A⁷ D⁷ A⁷

GUITAR SOLO PLAY 4X

BASS SOLO

40

C⁷ A⁷ C⁷

43

A⁷ C⁷ G/E F/A A⁷

SHE'S SO HARD TO SHAKE - 3

VERSE

47

C⁷ A⁷ C⁷

50

A⁷ C⁷ A⁷

53

G D A⁷ G/E F/A CHORUS A⁷

57

D⁷ A⁷ D⁷

60

A⁷ D⁷ A⁷

GUITAR SOLO PLAY 4X

63

D⁷ A⁷ C⁷

BASS SOLO

66

A⁷ C⁷ A⁷

69

C⁷ G/E F/A A⁷

SHE'S SO HARD TO SHAKE - 4

VERSE

72

C⁷ A⁷ C⁷

75

A⁷ C⁷ A⁷

78

G D A⁷ G/E F/A

CHORUS

81

A⁷ D⁷ A⁷

84

D⁷ A⁷ D⁷

87

A⁷ D⁷

OUTRO PLAY 4X

89

A⁷ C⁷ F/A C/E F/A