

Electric Bass

Graham Maby's bass line on Breaking Us In Two

♩ = 109

as performed by Joe Jackson on
Night And Day

Chorus 1

Chorus 1 musical notation (measures 1-24). The key signature is D major (two sharps). The time signature is 4/4. The bass line is written in bass clef. Chords are indicated above the staff: F# (m1), E/F# (m2), F# (m3), D (m4), E (m5), F# (m6), E/F# (m7), Bm (m8), A maj7 (m9), D (m10), E (m11), D (m12), E (m13), D (m14), D (m15), E (m16), F# (m17), E/F# (m18), F# (m19), D (m20), E (m21), F# (m22), E/F# (m23), Bm (m24), A maj7 (m25).

Verse 1

Verse 1 musical notation (measures 25-44). The key signature is D major (two sharps). The time signature is 4/4. The bass line is written in bass clef. Chords are indicated above the staff: D (m25), E (m26), F# (m27), Bm (m28), C#m (m29), D (m30), E (m31), F# (m32), D (m33), F#m (m34), E (m35), Bm (m36), C#m (m37), D (m38), E (m39), F# (m40), Bm (m41), E (m42), Am (m43), Bm (m44), D/E (m45), Am (m46), Em (m47), Cmaj7 (m48), Bm (m49), C#(sus4) (m50), C# (m51).

Breaking Us In Two - 2

Chorus 2

49 F# E/F# F# D E F# E/F#

55 Bm Amaj7 D E D

60 E D D E F# D E

Synth Solo

65 F# E/F# F# D E F# E/F#

71 Bm Amaj7 D E D

76 E D D E F#

Verse 2

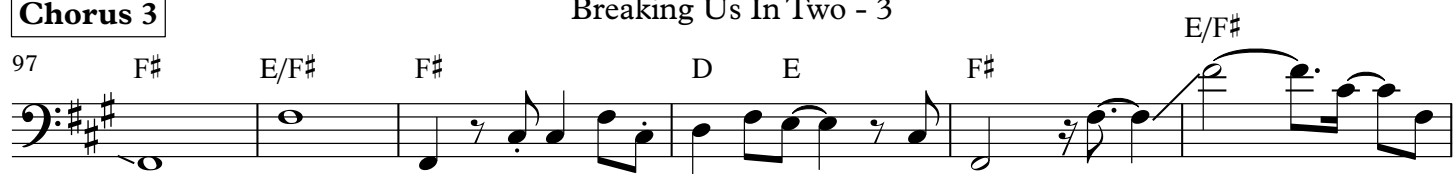
81 Bm C#m D F#m E Bm

86 C#m D E F# Bm E Am Bm D/E

91 Am Em Cmaj7 Bm C#(sus4) C#

Chorus 3

Breaking Us In Two - 3

**Outro - Repeat & fade out**