

Electric Bass

# Graham Maby's bass line on I'm The Man

as performed by Joe Jackson on  
*I'm The Man*

♩ = 177

4

E A D A E A D A

8

E

Detailed description: This block contains the first seven measures of the bass line. The key signature has three sharps (F#, C#, G#) and the time signature is 4/4. The tempo is marked as quarter note = 177. Measures 1-4 are marked with chords E, A, D, A, E, A, D, A. Measures 5-7 continue the pattern with E, A, D, A, E, A, D, A. The bass line consists of eighth and sixteenth notes, often beamed together.

## Verse 1

12

E A/E E

16

D A E B A

20

E A/E E

24

D A E B

Detailed description: This block contains measures 12-24 of the bass line. Measures 12-15 are marked with chords E, A/E, E. Measures 16-19 are marked with chords D, A, E, B, A. Measures 20-23 are marked with chords E, A/E, E. Measure 24 is marked with chords D, A, E, B. The bass line continues with eighth and sixteenth notes.

## Pre-Chorus 1

28

C#m A C#m A E B

32

C#m A C#m A B D

Detailed description: This block contains measures 28-32 of the bass line. Measures 28-31 are marked with chords C#m, A, C#m, A, E, B. Measure 32 is marked with chords C#m, A, C#m, A, B, D. The bass line continues with eighth and sixteenth notes.

**Chorus 1****I'm The Man - 2**

36 E A D A E A D A

40 E A D A E A D

45 E

**Verse 2**

49 E A/E E

53 D A E B A

57 E A/E E

61 D A E B

**Pre-Chorus 2**

65 C#m A C#m A E B

69 C#m A C#m A B D

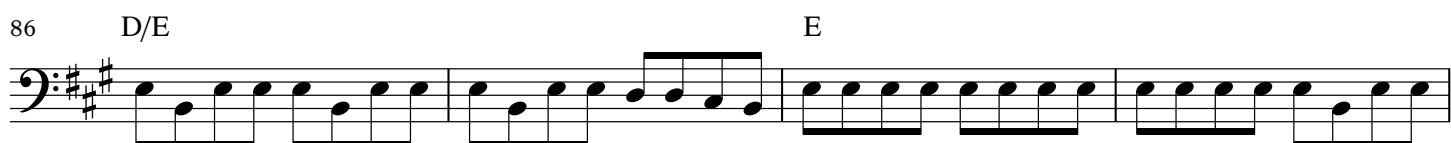
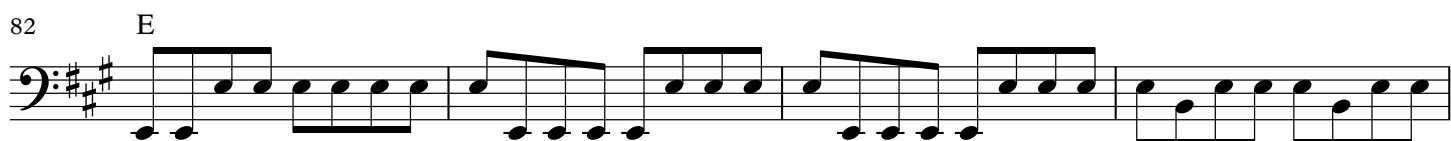
**Chorus 2**

73 E A D A E A D A

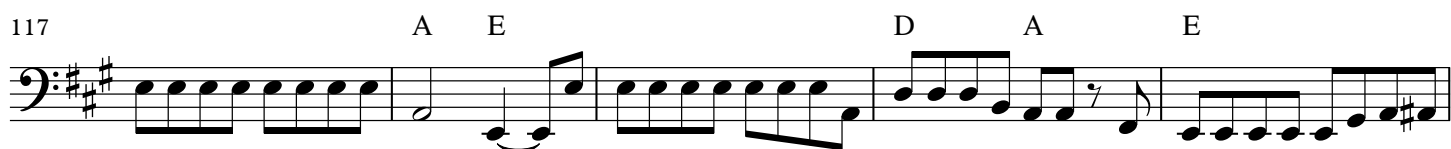
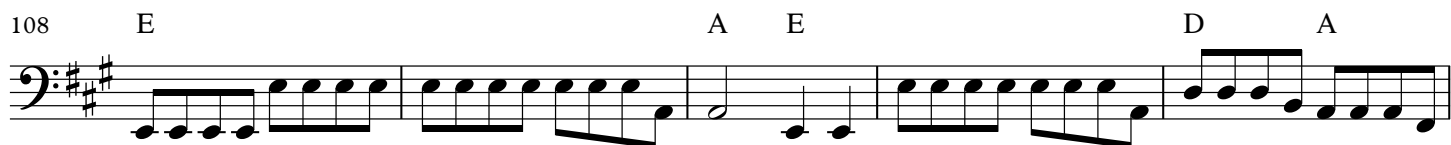
# I'm The Man - 3



## Guitar Solo



## Verse 3



# I'm The Man - 4

## Pre-Chorus 3

122 B C#m A C#m A

126 E B C#m A C#m A

## Chorus 3

130 B D E A D A

134 E A D A E A D A

138 E A D A E A D A

143 E A D A E A D A

147 E A D E A D A

151 E A D A E A D A

155 E A D E A D A

159 E A D A E A D A

163 E A D E