

Graham Maby's bass line on Crime Don't Pay

♩ = 121

Intro E D/B E D/B D A D A E⁷

12 E⁷ D⁷ C⁷ Bm C⁷ Bm E⁷ D⁷ E⁷ D⁷

17 C⁷ Bm C⁷ Bm C⁷ Bm

The image shows measures 17 through 20 of the bass line for 'The Sound of Silence'. Measure 17 starts with a C7 chord and contains a dotted quarter note G2, an eighth rest, a dotted quarter note F2, an eighth rest, and a dotted quarter note E2. Measure 18 contains a Bm chord and has a dotted quarter note D2, an eighth rest, a dotted quarter note C2, an eighth rest, and a dotted quarter note B1. Measure 19 contains a C7 chord and has a dotted quarter note A1, an eighth rest, a dotted quarter note G1, an eighth rest, and a dotted quarter note F1. Measure 20 contains a Bm chord and has a dotted quarter note E1, an eighth rest, a dotted quarter note D1, an eighth rest, and a dotted quarter note C1. The piece ends with a double bar line and a 4/4 time signature.

21 E D/B E D/B D A D A E D/B



26 E D/B D A D A E⁷

31 E7 D7

Fuzz on Fuzz off

36 E⁷ D⁷ C⁷ Bm C⁷ Bm E⁷ D⁷ E⁷ D⁷

[illegible]

Crime Don't Pay - 2

Chorus

46 C⁷ D E D/B E D/B D A D A

51 E⁷ E⁷

Fuzz on

Keyboard Solo

57 E⁷ D⁷ E⁷ D⁷ C⁷ Bm C⁷ Bm E⁷ D⁷

Fuzz off

62 E⁷ D⁷ C⁷ Bm C⁷ Bm C⁷ Bm C⁷ Bm

67 E⁷ D⁷ E⁷ D⁷ C⁷ Bm C⁷ Bm E⁷ D⁷

72 E⁷ D⁷ C⁷ Bm C⁷ Bm E⁷ D⁷ E⁷ D⁷

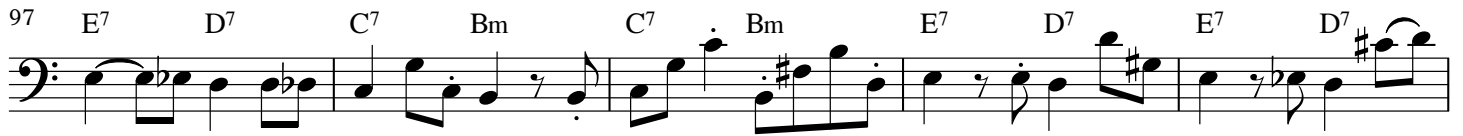
77 C⁷ Bm C⁷ Bm E⁷ D⁷ E⁷ D⁷ C⁷ Bm

82 C⁷ Bm E⁷ D⁷ E⁷ D⁷ C⁷ Bm C⁷ Bm

87 E⁷ D⁷ E⁷ D⁷ C⁷ Bm C⁷ Bm C⁷ Bm

92 E⁷ D⁷ E⁷ D⁷ C⁷ Bm C⁷ Bm E⁷ D⁷

Crime Don't Pay - 3



Fade out

