

ALAN SPENNER'S BASS LIN ON

FROM THE 1970 ALBUM
JESUS CHRIST SUPERSTAR

WHAT'S THE BUZZ - STRANGE THING MYSTIFYING

$\text{♩} = 114$

WHAT'S THE BUZZ - CHORUS

BASS GT.

4

This block contains the first two staves of the bass guitar part for the chorus. The first staff starts with a treble clef, a key signature of one sharp (F#), and a 4/4 time signature. It contains the first four measures of the chorus, with asterisks marking the first and third measures. The second staff continues the melody from measure 5 to measure 8, with a measure rest in measure 7.

VERSE

7

LEAD VOCAL ENTERS

12

This block contains the first two staves of the bass guitar part for the verse. The first staff starts with a treble clef, a key signature of one sharp (F#), and a 4/4 time signature. It contains the first four measures of the verse, with a measure rest in measure 7. The second staff continues the melody from measure 5 to measure 8, with a measure rest in measure 7.

CHORUS

15

18

21

24

27

This block contains the first four staves of the bass guitar part for the chorus. The first staff starts with a treble clef, a key signature of one sharp (F#), and a 4/4 time signature. It contains the first four measures of the chorus, with a measure rest in measure 7. The second staff continues the melody from measure 5 to measure 8, with a measure rest in measure 7. The third staff continues the melody from measure 9 to measure 12, with a measure rest in measure 11. The fourth staff continues the melody from measure 13 to measure 16, with a measure rest in measure 15. The fifth staff continues the melody from measure 17 to measure 20, with a measure rest in measure 19. The sixth staff continues the melody from measure 21 to measure 24, with a measure rest in measure 23. The seventh staff continues the melody from measure 25 to measure 28, with a measure rest in measure 27.

© 1996 DECCA RECORDS

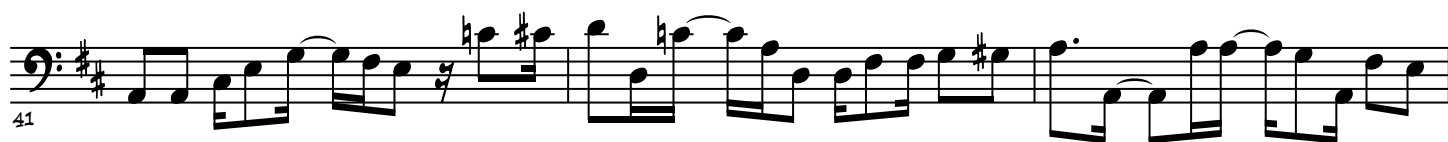
TRANSCRIBED BY ARCELLUS SYKES - WWW.SYKESTRANSSCRIPTION.COM

2
VERSE

WHAT'S THE BUZZ - STRANGE THING MYSTIFYING



CHORUS



VERSE



CHORUS



WHAT'S THE BUZZ - STRANGE THING MYSTIFYING

3

65

STRANGE THING MYSTIFYING

68

The image shows the bass line of the song 'Strawberry Fields' by The Beatles. It is written on a single staff in bass clef with a key signature of one sharp (F#). The melody consists of eighth and sixteenth notes, with some measures containing rests. The notation is in a standard musical score format.

Musical notation for the bass line of 'The Rose Tree'. The notation is on a single staff with a bass clef. It begins with a treble clef and a key signature of one flat (B-flat). The melody consists of eighth and quarter notes, with some measures containing beamed eighth notes. The piece ends with a double bar line.

Musical notation for the bass line of 'The Rose Tree'. The key signature is one flat (B-flat). The melody consists of eighth and sixteenth notes, with some rests. The notation is written on a single staff.

Musical notation for the bass line of 'The Rose Tree'. The notation is on a single staff with a bass clef. It begins with a key signature of one flat (B-flat) and a common time signature (C). The melody consists of eighth and quarter notes, with some measures containing beamed eighth notes. The notation includes a repeat sign and a key signature change to two flats (B-flat and E-flat) for the final section.

Musical notation for the bass staff of Example 8-7. The staff begins with a double bar line and a key signature change to one flat (B-flat). The melody consists of eighth and sixteenth notes, some beamed together, and rests. A measure number '87' is visible at the start.

92 **SLOWER**

96

101

104

The image shows the bass line of a musical score for 'The Rose Tree'. It begins with a treble clef and a key signature of one flat (B-flat). The first measure is in 3/4 time, followed by a 4/4 time signature. The melody starts with a quarter note G2, followed by eighth notes A2, Bb2, and C3. The next measure contains a quarter note D3, an eighth note E3, and a quarter note F3. This is followed by a measure with a quarter note G3, an eighth note A3, and a quarter note Bb3. The final measure of the first line is a quarter note C4. The second line begins with a whole note D4, followed by a quarter rest, a quarter note E4, a quarter rest, and a quarter note F4. The third line contains a quarter note G4, an eighth note A4, and a quarter note Bb4. The final measure of the third line is a quarter note C5, followed by a double bar line and a key signature change to two flats (B-flat and E-flat).

[illegible]

119