

WE CAN BE TOGETHER

INTRO

♩=113

BASS GT.

'DROP-D' TUNING

D C D C

5

10

CHORUS

G D/F# C G D/F# C G D/F# C

14

VOCAL ENTERS

C G D/F# C G D/F# C

19

GT. SOLO

D C

VERSE

D D C D 3x D

25

30

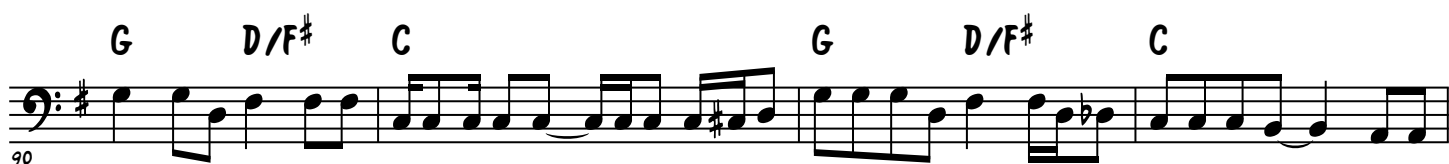
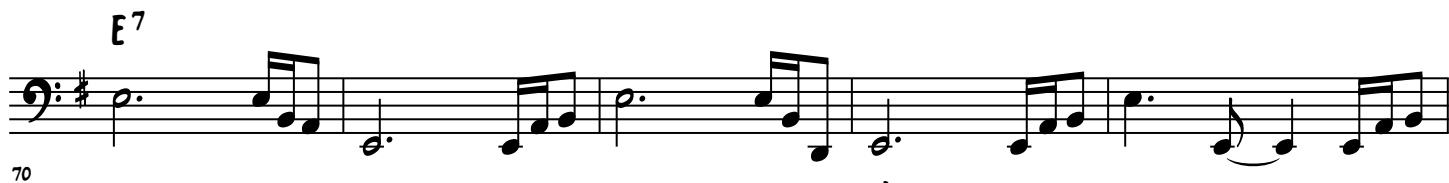
35

CHORUS

G D/F# C G D/F# C

39

WE CAN BE TOGETHER



GT. SOLO

94

G D/F# C

7 4

98

D C D C

101

D C D C

105

D C D D C

109

D C D C

CHORUS

113

D G D/F# C G D/F# C

118

G D/F# C G D/F# C G D/F#

123

C G D/F# C G D/F# C

128

G D/F# C G D/F# C G D/F# C

OUTRO G D/F# C G D/F# C G D/F#

