

2 VERSE

3/5 OF A MILE IN 10 SECONDS

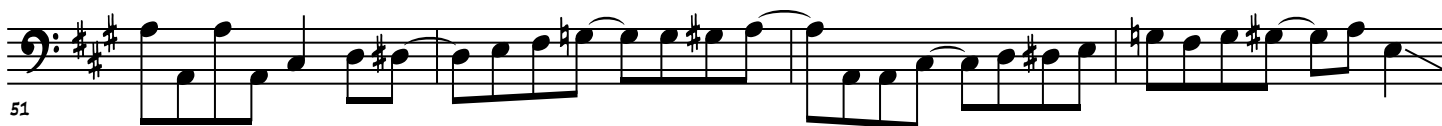
B⁷



43



47



51

CHORUS

B⁷

G



55

F

E MIN

G

F



60

E MIN

B⁷



65

GUITAR SOLO

B⁷



69

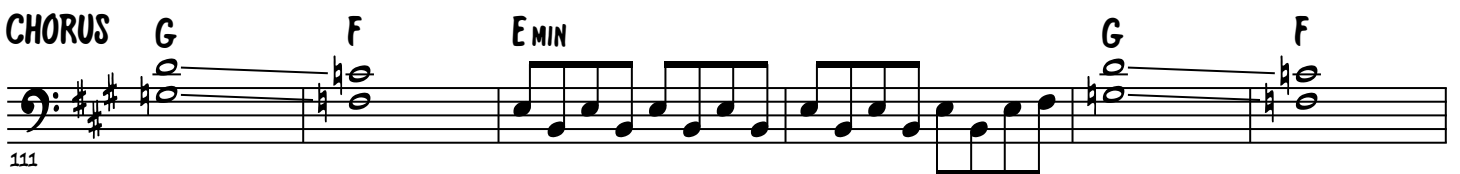


73

A⁷



77



122

126

A⁷

130

B⁷

Musical notation for the bass line of 'The Rose Tree'. The key signature is one sharp (F#). The melody consists of eighth and sixteenth notes. Chords G and F are indicated above the staff.

139

EMIN G F EMIN

The image shows a musical score for the bass line of 'The Sound of Silence'. The notation is on a single staff with a bass clef and a key signature of one sharp (F#). The music consists of eighth and sixteenth notes. Above the staff, the chords E MIN, G, F, and E MIN are indicated. The measure number 139 is written at the bottom left.

144

B⁷

VERSE

B⁷

148

152

A⁷

156

B⁷

160

Staff 160-164: Bass clef, key of D major (two sharps). The staff contains a series of eighth and sixteenth notes. Above the staff, there are two whole notes: G (on the second line) and F (on the first space). A slur connects these two notes.

165

Staff 165-169: Bass clef, key of D major. The staff contains a series of eighth and sixteenth notes. Above the staff, there are four whole notes: E MIN (on the first space), G (on the second line), F (on the first space), and E MIN (on the first space). A slur connects the first two notes (E MIN and G).

170

Staff 170-174: Bass clef, key of D major. The staff contains a series of eighth and sixteenth notes. Above the staff, there are four whole notes: G (on the second line), F (on the first space), E MIN (on the first space), and E MIN (on the first space). A slur connects the first two notes (G and F). Below the staff, there is a "Rit." marking under the first measure and a "3" marking under the last measure.