

-BROWN, BRUCE

JACK BRUCE'S BASS LINE ON

# WAITING ON A WORD

FROM HIS 1993 ALBUM  
*SOMETHIN' ELSE*

♩ = 91

VERSE

Bass line for the first verse, measures 1-6. Chords: C, F, C, F, C, F. Includes a slide into D at measure 6.

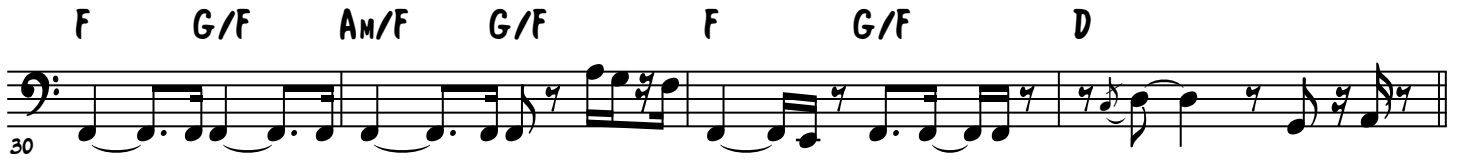
VERSE

Bass line for the second verse, measures 7-12. Chords: C, F, C, F, Am, G. Includes a slide into D at measure 12.

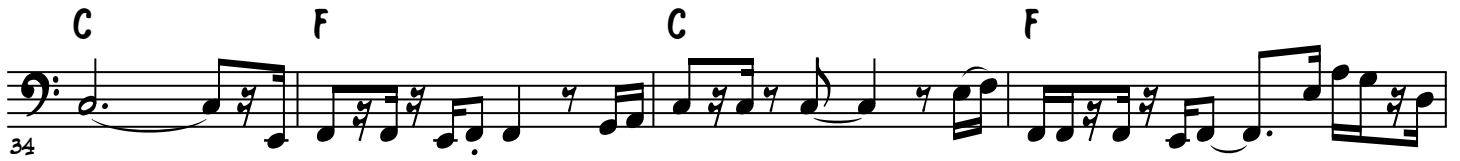
CHORUS

Bass line for the chorus, measures 13-18. Chords: F, Am, G, Bm, F, Am. Includes a slide into D at measure 14.

# WAITING ON A WORD - 2



## VERSE



## GUITAR SOLO



## CHORUS



# WAITING ON A WORD - 3

Am G Bm F G/F

58

Am/F G/F F G/F Am/F G/F F G/F

62

Am/F G/F F G/F Am/F G/F F G/F

66

## VERSE

D C F C

70

F C F C

74

F C F C

78

F C F C

82