

NOTHING IS THE SAME

FROM GRAND FUNK'S 1970 ALBUM
CLOSER TO HOME

♩ = 98

D^{MIN} /C G⁷ F

GUITAR ENTERS

D^{MIN} /C 1. G⁷ F 2. G⁷ F D^{7(♯9)} G/D

VERSE

D^{7(♯9)} G/D D^{7(♯9)} G/D D^{7(♯9)} G/D D^{7(♯9)} G/D

D^{7(♯9)} G/D D^{7(♯9)} G/D 1. D^{7(♯9)} G/D 2. D^{7(♯9)}

CHORUS

B E/B B E/B A D/A A D/A G C/G

G C/G F G B^b C D G/D D

D^{7(♯9)} G/D D^{7(♯9)} G/D D^{7(♯9)} G/D D^{7(♯9)} G/D

VERSE

D^{7(♯9)} G/D D^{7(♯9)} G/D D^{7(♯9)} G/D D^{7(♯9)} G/D

NOTHING IS THE SAME



35

CHORUS



39



44

INTERLUDE

N.C.



48



51



55



57



59



61



63



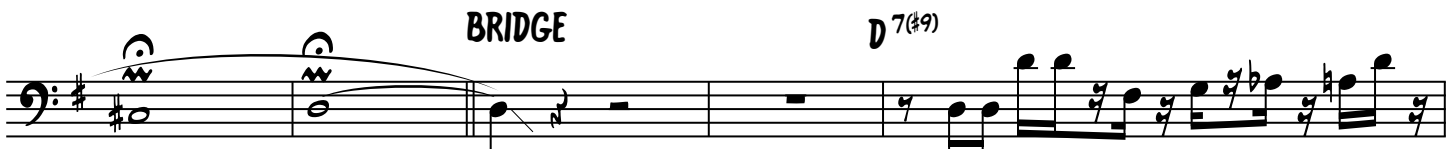
65



67



69



73



78



81



84



87

OUTRO

D MIN

/C

