

AMBLE ON

$\text{♩} = 140$ **3** A^9

BASS GT. 

7 A^9 DRUMS ENTER



10

D^7 A^9



13

E^7 E^b7 D^7 A^9



16

VERSE

A^9



20 VOCAL ENTERS

D^7



23

A^9



26

AMBLE ON - 2

E⁷

E^{b7}

D⁷

A⁹



VERSE

N.C.



D⁷

A⁹



E⁷

E^{b7}

D⁷

A⁹



GUITAR SOLO

A⁹



D⁷



A⁹



E⁷

E^{b7}

D⁷

A⁹



VERSE

N.C.



D⁷



A⁹

E⁷

E^{b7}

D⁷



GUITAR SOLO

A⁹

A⁹



D⁷

A⁹



E⁷

E^{b7}

D⁷

A⁹



VERSE

N.C.



AMBLE ON - 4



AMBLE ON - 5

OUTRO

D⁷



A⁹

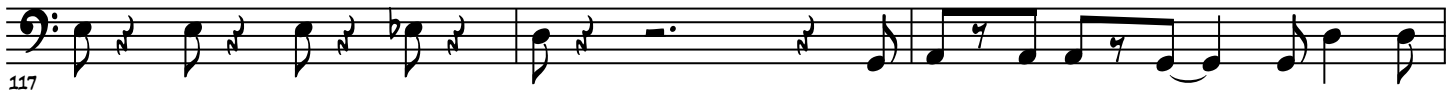


E⁷

E^{b7}

D⁷

A⁹



RUBATO

