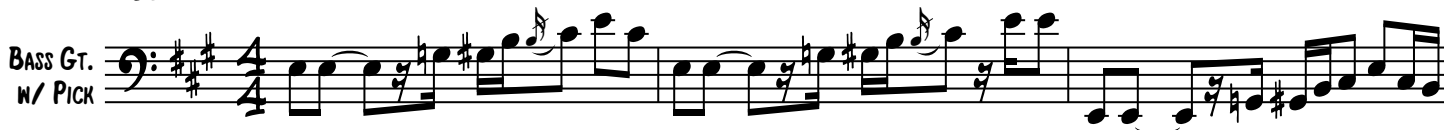


RIDE ON A PONY

♩=63

BASS GT.
W/ PICK



VERSE

E⁶



VOCAL ENTERS

A

E⁶

1.
B⁶



E⁶

2.
B⁶

D

A



E

A

E

A

CHORUS

E

B/D[#]



D

A/C[#]

E

B

D

A

E⁶



VERSE

E⁶



A

E⁶



RIDE ON A PONY

31

D A E A E

Staff 31-35: Bass line in D major. Measures 31-35 contain eighth and quarter notes with a melodic line. Chords D, A, E, A, and E are indicated above the staff.

36

CHORUS

A E B/D# D A/C# E B

Staff 36-40: Bass line for the chorus. Measures 36-40 contain eighth and quarter notes. Chords A, E, B/D#, D, A/C#, E, and B are indicated above the staff.

40

GUITAR SOLO

D A E^b

Staff 40-44: Bass line for the guitar solo. Measures 40-44 contain eighth and quarter notes. Chords D, A, and E^b are indicated above the staff.

44

B^b A

Staff 44-48: Bass line for the guitar solo. Measures 44-48 contain eighth and quarter notes. Chords B^b and A are indicated above the staff.

49

E B D A E B E A

Staff 49-53: Bass line for the guitar solo. Measures 49-53 contain eighth and quarter notes. Chords E, B, D, A, E, B, E, and A are indicated above the staff.

53

E B D A E B D A

Staff 53-57: Bass line for the guitar solo. Measures 53-57 contain eighth and quarter notes. Chords E, B, D, A, E, B, D, and A are indicated above the staff.

57

CHORUS

E B/D# D A/C# E B

Staff 57-61: Bass line for the chorus. Measures 57-61 contain eighth and quarter notes. Chords E, B/D#, D, A/C#, E, and B are indicated above the staff.

60

D A E B/D# D A/C#

Staff 60-64: Bass line for the chorus. Measures 60-64 contain eighth and quarter notes. Chords D, A, E, B/D#, D, and A/C# are indicated above the staff.

63

E B D A E

Rit.

Staff 63-67: Bass line for the chorus. Measures 63-67 contain eighth and quarter notes. Chords E, B, D, A, and E are indicated above the staff. The piece ends with a 'Rit.' (Ritardando) marking.