


RIDE ON A PONY

BASS GT. 

VERSE

E



Musical notation for the bass line of 'The Sound of Silence'. The key signature is three sharps (F#, C#, G#) and the time signature is 4/4. The notation includes a treble clef, a key signature of three sharps, and a time signature of 4/4. The melody consists of eighth and sixteenth notes, with rests and ties. The notation is written on a single staff.

10

B E

VERSE E

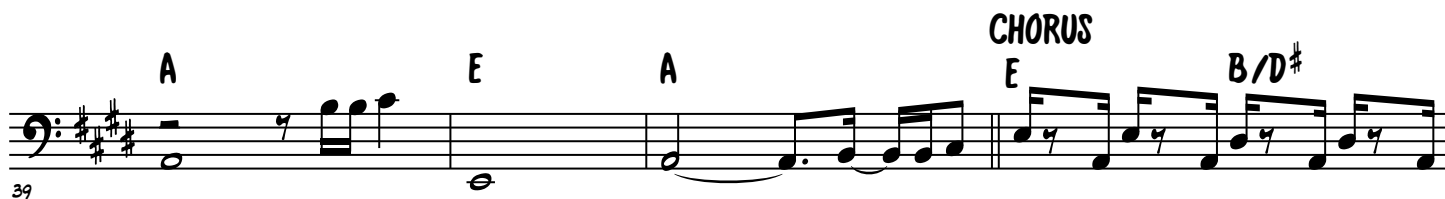
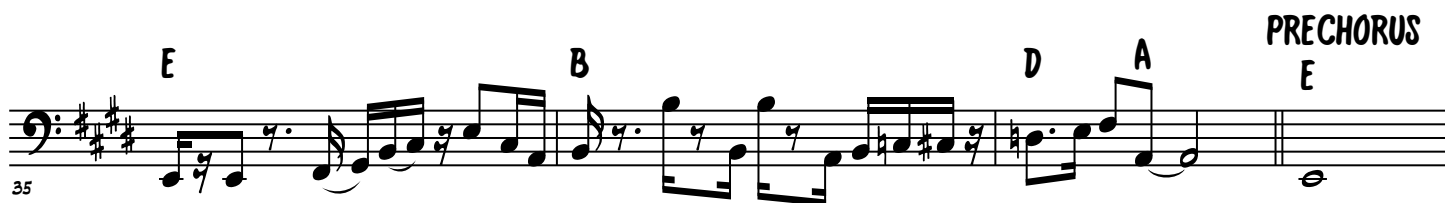
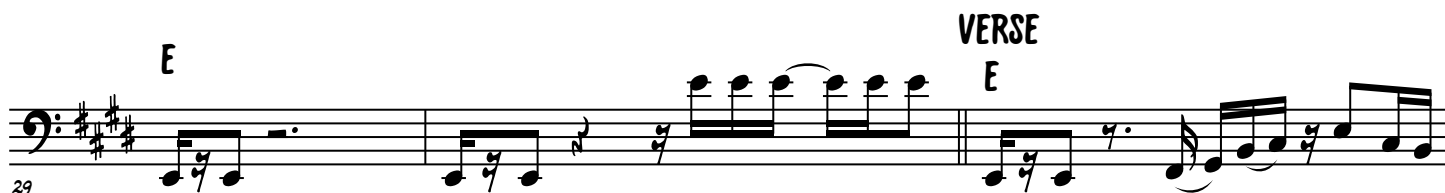
14 

[illegible]

PRECHORUS **CHORUS**

The image shows a musical score for the bass line of 'I Wanna Dance with Somebody' by Whitney Houston. It is divided into two sections: 'PRECHORUS' and 'CHORUS'. The 'PRECHORUS' section consists of four measures. The first measure has a whole note E (labeled 'E' above the staff). The second measure has a whole note A (labeled 'A' above the staff). The third measure has a whole note E (labeled 'E' above the staff). The fourth measure has a whole note A (labeled 'A' above the staff). The 'CHORUS' section starts with a double bar line and consists of four measures. The first measure has a half note E (labeled 'E' above the staff). The second measure has a half note A (labeled 'A' above the staff). The third measure has a half note E (labeled 'E' above the staff). The fourth measure has a half note A (labeled 'A' above the staff). The key signature is one sharp (F#) and the time signature is 4/4. The page number '20' is written in the bottom left corner.

RIDE ON A PONY - 2



GUITAR SOLO



RIDE ON A PONY - 3

49

B A

53

E B D A

56

E B D A E B

59

D A/C# E B D A

CHORUS

62

E B/D# D A/C# E B

65

D A/C# E B/D# D A/C#

68

E B/D# D A/C# E