

CARL RADLE'S BASS LINE ON

-BRAMLETT, CLAPTON

# BOTTLE OF RED WINE

FROM ERIC CLAPTON'S 1970 ALBUM *ERIC CLAPTON*

♩=135

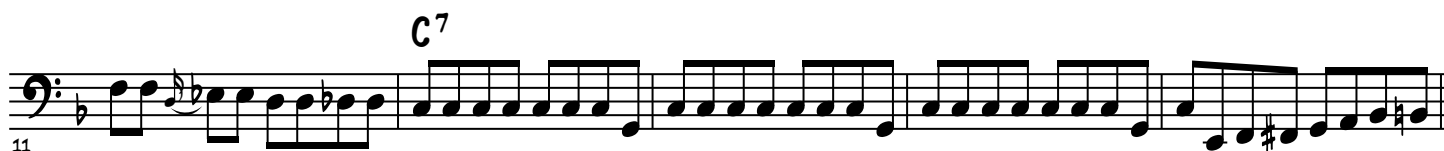


2

VERSE

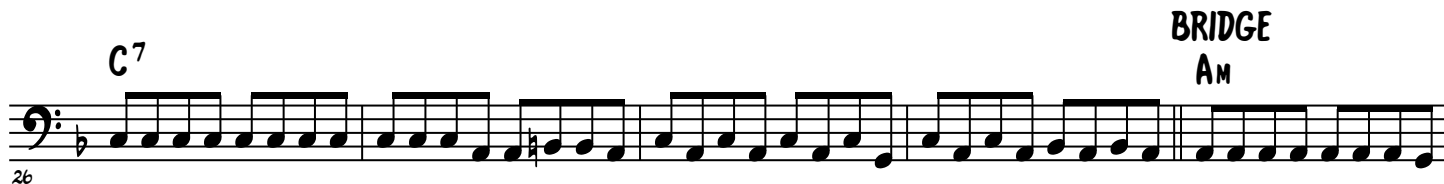
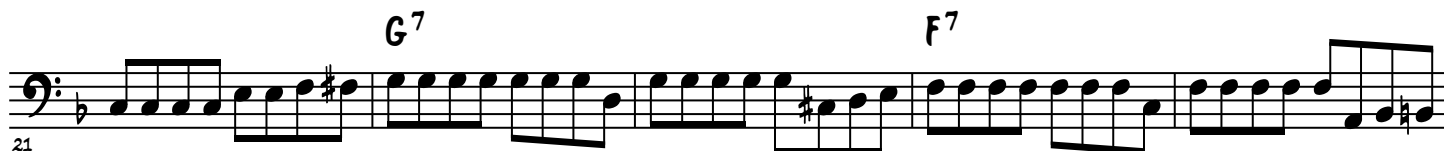
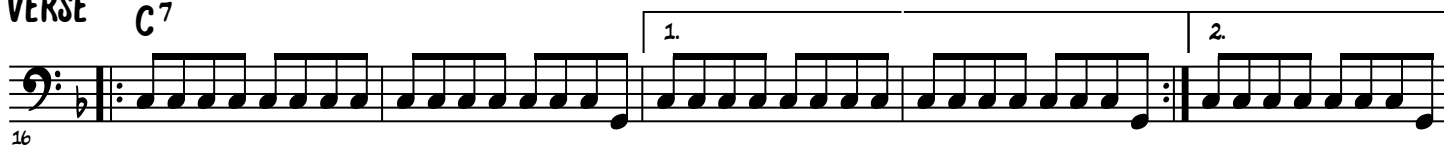
C<sup>7</sup>

BASS GT



VERSE

C<sup>7</sup>



BRIDGE

A<sub>M</sub>



# BOTTLE OF RED WINE - 2

36

C Am D<sup>7</sup>

Measures 36-40: Bass line with eighth notes. Chords: C (36-37), Am (38-39), D<sup>7</sup> (40).

41

F G<sup>7</sup>

Measures 41-45: Bass line with eighth notes. Chords: F (41-42), G<sup>7</sup> (43-45).

## GUITAR SOLO

46

C<sup>7</sup>

1. 2.

Measures 46-50: Bass line with eighth notes. Chord: C<sup>7</sup> (46-50). First and second endings marked.

51

G<sup>7</sup> F<sup>7</sup>

3

Measures 51-55: Bass line with eighth notes. Chords: G<sup>7</sup> (51-52), F<sup>7</sup> (53-55). Measure 55 has a triplet of eighth notes.

56

C<sup>7</sup> VERSE C<sup>7</sup>

Measures 56-60: Bass line with eighth notes. Chord: C<sup>7</sup> (56-60). Measure 60 is the start of the verse.

61

1. 2. G<sup>7</sup>

Measures 61-65: Bass line with eighth notes. Chord: G<sup>7</sup> (61-65). First and second endings marked.

66

OUTRO F<sup>7</sup> C<sup>7</sup> A<sup>7</sup>

Measures 66-70: Bass line with eighth notes. Chords: F<sup>7</sup> (66-67), C<sup>7</sup> (68-69), A<sup>7</sup> (70).

71

D<sub>M</sub> G<sup>7</sup> C<sup>7</sup> A<sup>7</sup> D<sub>M</sub>

Measures 71-75: Bass line with eighth notes. Chords: D<sub>M</sub> (71-72), G<sup>7</sup> (73-74), C<sup>7</sup> (75-76), A<sup>7</sup> (77-78), D<sub>M</sub> (79-80).

BOTTLE OF RED WINE - 3

76

76 77 78 79 80

G<sup>7</sup> C<sup>7</sup> A<sup>7</sup> D<sub>m</sub> G<sup>7</sup>

81

81 82 83 84 85

C<sup>7</sup> A<sup>7</sup> D<sub>m</sub> G<sup>7</sup> C<sup>7</sup>

86

86 87 88 89 90

A<sup>7</sup> D<sub>m</sub> G<sup>7</sup> C<sup>7</sup>

RIT.

90

90 91 92

A<sup>7</sup> F C