

GREG LAKE'S BASS LINE ON TARKUS I: ERUPTION

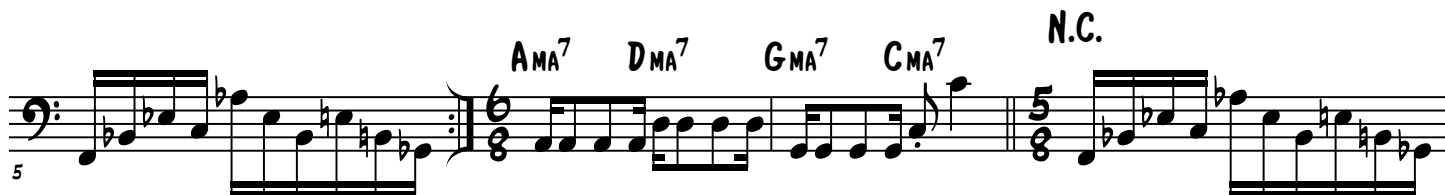
FROM EMERSON, LAKE & PALMER'S 1971 ALBUM

TARKUS

SYNTH FADES IN
APPROX 0:33

$\text{♩} = 220$

N.C.



TARKUS I: ERUPTION - 2

N.C.

29

The musical notation for the N.C. section is written on a single staff in bass clef. It begins with a 4/4 time signature and a key signature of one flat (B-flat). The first measure contains a half note G2, a quarter note A2, and a quarter note B-flat2. The second measure contains a half note C3, a quarter note D3, and a quarter note E3. The third measure contains a half note F3, a quarter note G3, and a quarter note A3. The fourth measure contains a half note B-flat3, a quarter note C4, and a quarter note D4. The fifth measure contains a half note E4, a quarter note F4, and a quarter note G4. The sixth measure contains a half note A4, a quarter note B-flat4, and a quarter note C5. The seventh measure contains a half note D5, a quarter note E5, and a quarter note F5. The eighth measure contains a half note G5, a quarter note A5, and a quarter note B5. The ninth measure contains a half note C6, a quarter note D6, and a quarter note E6. The tenth measure contains a half note F6, a quarter note G6, and a quarter note A6. The eleventh measure contains a half note B6, a quarter note C7, and a quarter note D7. The twelfth measure contains a half note E7, a quarter note F7, and a quarter note G7. The thirteenth measure contains a half note A7, a quarter note B7, and a quarter note C8. The fourteenth measure contains a half note D8, a quarter note E8, and a quarter note F8. The fifteenth measure contains a half note G8, a quarter note A8, and a quarter note B8. The sixteenth measure contains a half note C9, a quarter note D9, and a quarter note E9. The seventeenth measure contains a half note F9, a quarter note G9, and a quarter note A9. The eighteenth measure contains a half note B9, a quarter note C10, and a quarter note D10. The nineteenth measure contains a half note E10, a quarter note F10, and a quarter note G10. The twentieth measure contains a half note A10, a quarter note B10, and a quarter note C11. The twenty-first measure contains a half note D11, a quarter note E11, and a quarter note F11. The twenty-second measure contains a half note G11, a quarter note A11, and a quarter note B11. The twenty-third measure contains a half note C12, a quarter note D12, and a quarter note E12. The twenty-fourth measure contains a half note F12, a quarter note G12, and a quarter note A12. The twenty-fifth measure contains a half note B12, a quarter note C13, and a quarter note D13. The twenty-sixth measure contains a half note E13, a quarter note F13, and a quarter note G13. The twenty-seventh measure contains a half note A13, a quarter note B13, and a quarter note C14. The twenty-eighth measure contains a half note D14, a quarter note E14, and a quarter note F14. The twenty-ninth measure contains a half note G14, a quarter note A14, and a quarter note B14. The thirtieth measure contains a half note C15, a quarter note D15, and a quarter note E15. The thirty-first measure contains a half note F15, a quarter note G15, and a quarter note A15. The thirty-second measure contains a half note B15, a quarter note C16, and a quarter note D16. The thirty-third measure contains a half note E16, a quarter note F16, and a quarter note G16. The thirty-fourth measure contains a half note A16, a quarter note B16, and a quarter note C17. The thirty-fifth measure contains a half note D17, a quarter note E17, and a quarter note F17. The thirty-sixth measure contains a half note G17, a quarter note A17, and a quarter note B17. The thirty-seventh measure contains a half note C18, a quarter note D18, and a quarter note E18. The thirty-eighth measure contains a half note F18, a quarter note G18, and a quarter note A18. The thirty-ninth measure contains a half note B18, a quarter note C19, and a quarter note D19. The fortieth measure contains a half note E19, a quarter note F19, and a quarter note G19. The forty-first measure contains a half note A19, a quarter note B19, and a quarter note C20. The forty-second measure contains a half note D20, a quarter note E20, and a quarter note F20. The forty-third measure contains a half note G20, a quarter note A20, and a quarter note B20. The forty-fourth measure contains a half note C21, a quarter note D21, and a quarter note E21. The forty-fifth measure contains a half note F21, a quarter note G21, and a quarter note A21. The forty-sixth measure contains a half note B21, a quarter note C22, and a quarter note D22. The forty-seventh measure contains a half note E22, a quarter note F22, and a quarter note G22. The forty-eighth measure contains a half note A22, a quarter note B22, and a quarter note C23. The forty-ninth measure contains a half note D23, a quarter note E23, and a quarter note F23. The fiftieth measure contains a half note G23, a quarter note A23, and a quarter note B23. The fifty-first measure contains a half note C24, a quarter note D24, and a quarter note E24. The fifty-second measure contains a half note F24, a quarter note G24, and a quarter note A24. The fifty-third measure contains a half note B24, a quarter note C25, and a quarter note D25. The fifty-fourth measure contains a half note E25, a quarter note F25, and a quarter note G25. The fifty-fifth measure contains a half note A25, a quarter note B25, and a quarter note C26. The fifty-sixth measure contains a half note D26, a quarter note E26, and a quarter note F26. The fifty-seventh measure contains a half note G26, a quarter note A26, and a quarter note B26. The fifty-eighth measure contains a half note C27, a quarter note D27, and a quarter note E27. The fifty-ninth measure contains a half note F27, a quarter note G27, and a quarter note A27. The sixtieth measure contains a half note B27, a quarter note C28, and a quarter note D28. The sixty-first measure contains a half note E28, a quarter note F28, and a quarter note G28. The sixty-second measure contains a half note A28, a quarter note B28, and a quarter note C29. The sixty-third measure contains a half note D29, a quarter note E29, and a quarter note F29. The sixty-fourth measure contains a half note G29, a quarter note A29, and a quarter note B29. The sixty-fifth measure contains a half note C30, a quarter note D30, and a quarter note E30. The sixty-sixth measure contains a half note F30, a quarter note G30, and a quarter note A30. The sixty-seventh measure contains a half note B30, a quarter note C31, and a quarter note D31. The sixty-eighth measure contains a half note E31, a quarter note F31, and a quarter note G31. The sixty-ninth measure contains a half note A31, a quarter note B31, and a quarter note C32. The seventieth measure contains a half note D32, a quarter note E32, and a quarter note F32. The seventy-first measure contains a half note G32, a quarter note A32, and a quarter note B32. The seventy-second measure contains a half note C33, a quarter note D33, and a quarter note E33. The seventy-third measure contains a half note F33, a quarter note G33, and a quarter note A33. The seventy-fourth measure contains a half note B33, a quarter note C34, and a quarter note D34. The seventy-fifth measure contains a half note E34, a quarter note F34, and a quarter note G34. The seventy-sixth measure contains a half note A34, a quarter note B34, and a quarter note C35. The seventy-seventh measure contains a half note D35, a quarter note E35, and a quarter note F35. The seventy-eighth measure contains a half note G35, a quarter note A35, and a quarter note B35. The seventy-ninth measure contains a half note C36, a quarter note D36, and a quarter note E36. The eightieth measure contains a half note F36, a quarter note G36, and a quarter note A36. The eighty-first measure contains a half note B36, a quarter note C37, and a quarter note D37. The eighty-second measure contains a half note E37, a quarter note F37, and a quarter note G37. The eighty-third measure contains a half note A37, a quarter note B37, and a quarter note C38. The eighty-fourth measure contains a half note D38, a quarter note E38, and a quarter note F38. The eighty-fifth measure contains a half note G38, a quarter note A38, and a quarter note B38. The eighty-sixth measure contains a half note C39, a quarter note D39, and a quarter note E39. The eighty-seventh measure contains a half note F39, a quarter note G39, and a quarter note A39. The eighty-eighth measure contains a half note B39, a quarter note C40, and a quarter note D40. The eighty-ninth measure contains a half note E40, a quarter note F40, and a quarter note G40. The ninetieth measure contains a half note A40, a quarter note B40, and a quarter note C41. The hundredth measure contains a half note D41, a quarter note E41, and a quarter note F41. The hundred-first measure contains a half note G41, a quarter note A41, and a quarter note B41. The hundred-second measure contains a half note C42, a quarter note D42, and a quarter note E42. The hundred-third measure contains a half note F42, a quarter note G42, and a quarter note A42. The hundred-fourth measure contains a half note B42, a quarter note C43, and a quarter note D43. The hundred-fifth measure contains a half note E43, a quarter note F43, and a quarter note G43. The hundred-sixth measure contains a half note A43, a quarter note B43, and a quarter note C44. The hundred-seventh measure contains a half note D44, a quarter note E44, and a quarter note F44. The hundred-eighth measure contains a half note G44, a quarter note A44, and a quarter note B44. The hundred-ninth measure contains a half note C45, a quarter note D45, and a quarter note E45. The hundred-tieth measure contains a half note F45, a quarter note G45, and a quarter note A45. The hundred-first measure contains a half note B45, a quarter note C46, and a quarter note D46. The hundred-second measure contains a half note E46, a quarter note F46, and a quarter note G46. The hundred-third measure contains a half note A46, a quarter note B46, and a quarter note C47. The hundred-fourth measure contains a half note D47, a quarter note E47, and a quarter note F47. The hundred-fifth measure contains a half note G47, a quarter note A47, and a quarter note B47. The hundred-sixth measure contains a half note C48, a quarter note D48, and a quarter note E48. The hundred-seventh measure contains a half note F48, a quarter note G48, and a quarter note A48. The hundred-eighth measure contains a half note B48, a quarter note C49, and a quarter note D49. The hundred-ninth measure contains a half note E49, a quarter note F49, and a quarter note G49. The hundred-tieth measure contains a half note A49, a quarter note B49, and a quarter note C50. The hundred-first measure contains a half note D50, a quarter note E50, and a quarter note F50. The hundred-second measure contains a half note G50, a quarter note A50, and a quarter note B50. The hundred-third measure contains a half note C51, a quarter note D51, and a quarter note E51. The hundred-fourth measure contains a half note F51, a quarter note G51, and a quarter note A51. The hundred-fifth measure contains a half note B51, a quarter note C52, and a quarter note D52. The hundred-sixth measure contains a half note E52, a quarter note F52, and a quarter note G52. The hundred-seventh measure contains a half note A52, a quarter note B52, and a quarter note C53. The hundred-eighth measure contains a half note D53, a quarter note E53, and a quarter note F53. The hundred-ninth measure contains a half note G53, a quarter note A53, and a quarter note B53. The hundred-tieth measure contains a half note C54, a quarter note D54, and a quarter note E54. The hundred-first measure contains a half note F54, a quarter note G54, and a quarter note A54. The hundred-second measure contains a half note B54, a quarter note C55, and a quarter note D55. The hundred-third measure contains a half note E55, a quarter note F55, and a quarter note G55. The hundred-fourth measure contains a half note A55, a quarter note B55, and a quarter note C56. The hundred-fifth measure contains a half note D56, a quarter note E56, and a quarter note F56. The hundred-sixth measure contains a half note G56, a quarter note A56, and a quarter note B56. The hundred-seventh measure contains a half note C57, a quarter note D57, and a quarter note E57. The hundred-eighth measure contains a half note F57, a quarter note G57, and a quarter note A57. The hundred-ninth measure contains a half note B57, a quarter note C58, and a quarter note D58. The hundred-tieth measure contains a half note E58, a quarter note F58, and a quarter note G58. The hundred-first measure contains a half note A58, a quarter note B58, and a quarter note C59. The hundred-second measure contains a half note D59, a quarter note E59, and a quarter note F59. The hundred-third measure contains a half note G59, a quarter note A59, and a quarter note B59. The hundred-fourth measure contains a half note C60, a quarter note D60, and a quarter note E60. The hundred-fifth measure contains a half note F60, a quarter note G60, and a quarter note A60. The hundred-sixth measure contains a half note B60, a quarter note C61, and a quarter note D61. The hundred-seventh measure contains a half note E61, a quarter note F61, and a quarter note G61. The hundred-eighth measure contains a half note A61, a quarter note B61, and a quarter note C62. The hundred-ninth measure contains a half note D62, a quarter note E62, and a quarter note F62. The hundred-tieth measure contains a half note G62, a quarter note A62, and a quarter note B62. The hundred-first measure contains a half note C63, a quarter note D63, and a quarter note E63. The hundred-second measure contains a half note F63, a quarter note G63, and a quarter note A63. The hundred-third measure contains a half note B63, a quarter note C64, and a quarter note D64. The hundred-fourth measure contains a half note E64, a quarter note F64, and a quarter note G64. The hundred-fifth measure contains a half note A64, a quarter note B64, and a quarter note C65. The hundred-sixth measure contains a half note D65, a quarter note E65, and a quarter note F65. The hundred-seventh measure contains a half note G65, a quarter note A6

[illegible]

Musical notation for the bass line of 'The Rose Tree'. The notation is on a single staff with a bass clef. It consists of four measures. The first three measures each contain a triplet of eighth notes, with the notes in the third measure being B-flat, A, and G. The fourth measure contains a triplet of eighth notes, with the notes being B-flat, A, and G, followed by a quarter note G. The key signature has one flat (B-flat), and the time signature is 4/4.

E C A F D^m E D^b/F E^b/G N.C.

A⁷_{SUS} E⁷_{M/F} B E⁷_{SUS/G} N.C.
 B⁷_{SUS} D⁷_{SUS²} A⁷_{SUS} C⁷_{SUS²} E⁷_{SUS²} B⁷_{SUS/F#}

53 $A^b_{DIM}7$ D^b E D/E D^b/F G/F F^\sharp A^b_M G^b/B^b N.C.

56

60

D

Cm

F/B^b

B^b/A^b

B^b/D

G⁷