

NICK SIMPER'S BASS LINE ON
-NEIL DIAMOND
KENTUCKY WOMAN

THE BOOK OF TALIESYN

[illegible]

10  **VERSE**

Musical notation for the bass line of 'The Girl on the Train'. The notation is on a single staff with a bass clef and a key signature of one flat (B-flat). The tempo is marked 'Andante'. The music consists of a series of eighth and sixteenth notes, with some measures containing beamed sixteenth notes. The notation is divided into measures by vertical bar lines. Above the staff, there are three sets of chord symbols: F7, C7, and F7. The first measure is marked with a '15' below the staff.

Musical notation for the bass line of 'The Rose Tree'. The key signature is one flat (B-flat). The notation includes a treble clef and a key signature of one flat. The melody is written on a single staff. The notes are: C4 (quarter), D4 (quarter), E4 (quarter), F4 (quarter), G4 (quarter), A4 (quarter), B4 (quarter), C5 (quarter), B4 (quarter), A4 (quarter), G4 (quarter), F4 (quarter), E4 (quarter), D4 (quarter), C4 (half). The notes are grouped into measures by bar lines. The first measure contains C4, D4, E4, and F4. The second measure contains G4, A4, B4, and C5. The third measure contains B4, A4, G4, and F4. The fourth measure contains E4, D4, C4, and a whole rest. The fifth measure contains a whole rest. The sixth measure contains C4, D4, E4, and F4. The seventh measure contains G4, A4, B4, and C5. The eighth measure contains B4, A4, G4, and F4. The ninth measure contains E4, D4, C4, and a whole rest. The tenth measure contains a whole rest. The eleventh measure contains C4, D4, E4, and F4. The twelfth measure contains G4, A4, B4, and C5. The thirteenth measure contains B4, A4, G4, and F4. The fourteenth measure contains E4, D4, C4, and a whole rest. The fifteenth measure contains a whole rest. The sixteenth measure contains C4, D4, E4, and F4. The seventeenth measure contains G4, A4, B4, and C5. The eighteenth measure contains B4, A4, G4, and F4. The nineteenth measure contains E4, D4, C4, and a whole rest. The twentieth measure contains a whole rest. The twenty-first measure contains C4, D4, E4, and F4. The twenty-second measure contains G4, A4, B4, and C5. The twenty-third measure contains B4, A4, G4, and F4. The twenty-fourth measure contains E4, D4, C4, and a whole rest. The twenty-fifth measure contains a whole rest. The twenty-sixth measure contains C4, D4, E4, and F4. The twenty-seventh measure contains G4, A4, B4, and C5. The twenty-eighth measure contains B4, A4, G4, and F4. The twenty-ninth measure contains E4, D4, C4, and a whole rest. The thirtieth measure contains a whole rest. The thirty-first measure contains C4, D4, E4, and F4. The thirty-second measure contains G4, A4, B4, and C5. The thirty-third measure contains B4, A4, G4, and F4. The thirty-fourth measure contains E4, D4, C4, and a whole rest. The thirty-fifth measure contains a whole rest. The thirty-sixth measure contains C4, D4, E4, and F4. The thirty-seventh measure contains G4, A4, B4, and C5. The thirty-eighth measure contains B4, A4, G4, and F4. The thirty-ninth measure contains E4, D4, C4, and a whole rest. The fortieth measure contains a whole rest. The forty-first measure contains C4, D4, E4, and F4. The forty-second measure contains G4, A4, B4, and C5. The forty-third measure contains B4, A4, G4, and F4. The forty-fourth measure contains E4, D4, C4, and a whole rest. The forty-fifth measure contains a whole rest. The forty-sixth measure contains C4, D4, E4, and F4. The forty-seventh measure contains G4, A4, B4, and C5. The forty-eighth measure contains B4, A4, G4, and F4. The forty-ninth measure contains E4, D4, C4, and a whole rest. The fiftieth measure contains a whole rest. The fifty-first measure contains C4, D4, E4, and F4. The fifty-second measure contains G4, A4, B4, and C5. The fifty-third measure contains B4, A4, G4, and F4. The fifty-fourth measure contains E4, D4, C4, and a whole rest. The fifty-fifth measure contains a whole rest. The fifty-sixth measure contains C4, D4, E4, and F4. The fifty-seventh measure contains G4, A4, B4, and C5. The fifty-eighth measure contains B4, A4, G4, and F4. The fifty-ninth measure contains E4, D4, C4, and a whole rest. The sixtieth measure contains a whole rest. The sixty-first measure contains C4, D4, E4, and F4. The sixty-second measure contains G4, A4, B4, and C5. The sixty-third measure contains B4, A4, G4, and F4. The sixty-fourth measure contains E4, D4, C4, and a whole rest. The sixty-fifth measure contains a whole rest. The sixty-sixth measure contains C4, D4, E4, and F4. The sixty-seventh measure contains G4, A4, B4, and C5. The sixty-eighth measure contains B4, A4, G4, and F4. The sixty-ninth measure contains E4, D4, C4, and a whole rest. The seventieth measure contains a whole rest. The seventy-first measure contains C4, D4, E4, and F4. The seventy-second measure contains G4, A4, B4, and C5. The seventy-third measure contains B4, A4, G4, and F4. The seventy-fourth measure contains E4, D4, C4, and a whole rest. The seventy-fifth measure contains a whole rest. The seventy-sixth measure contains C4, D4, E4, and F4. The seventy-seventh measure contains G4, A4, B4, and C5. The seventy-eighth measure contains B4, A4, G4, and F4. The seventy-ninth measure contains E4, D4, C4, and a whole rest. The eightieth measure contains a whole rest. The eighty-first measure contains C4, D4, E4, and F4. The eighty-second measure contains G4, A4, B4, and C5. The eighty-third measure contains B4, A4, G4, and F4. The eighty-fourth measure contains E4, D4, C4, and a whole rest. The eighty-fifth measure contains a whole rest. The eighty-sixth measure contains C4, D4, E4, and F4. The eighty-seventh measure contains G4, A4, B4, and C5. The eighty-eighth measure contains B4, A4, G4, and F4. The eighty-ninth measure contains E4, D4, C4, and a whole rest. The ninetieth measure contains a whole rest. The ninety-first measure contains C4, D4, E4, and F4. The ninety-second measure contains G4, A4, B4, and C5. The ninety-third measure contains B4, A4, G4, and F4. The ninety-fourth measure contains E4, D4, C4, and a whole rest. The ninety-fifth measure contains a whole rest. The ninety-sixth measure contains C4, D4, E4, and F4. The ninety-seventh measure contains G4, A4, B4, and C5. The ninety-eighth measure contains B4, A4, G4, and F4. The ninety-ninth measure contains E4, D4, C4, and a whole rest. The hundredth measure contains a whole rest.

25

CHORUS

The musical notation for the chorus is written on a single staff in bass clef with a key signature of one flat (B-flat). It begins with a double bar line and a repeat sign. The melody consists of eighth and quarter notes. Above the staff, the chords C, F, C, C, and F are indicated. The notation includes a repeat sign at the beginning of the chorus and a double bar line at the end.

1. C 2. N.C. VERSE C⁷ F⁷ C⁷

29 30

KENTUCKY WOMAN - 2

34

F⁷ G⁷

CHORUS

39

C F C C F

1. C

43

2. C BRIDGE D_M

48

C

53

F⁷

CHORUS

58

C F C C F

1. C

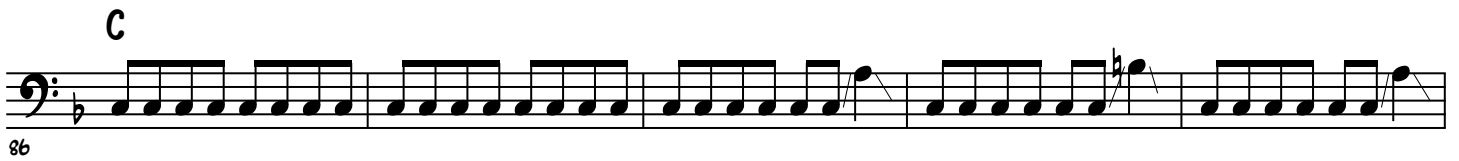
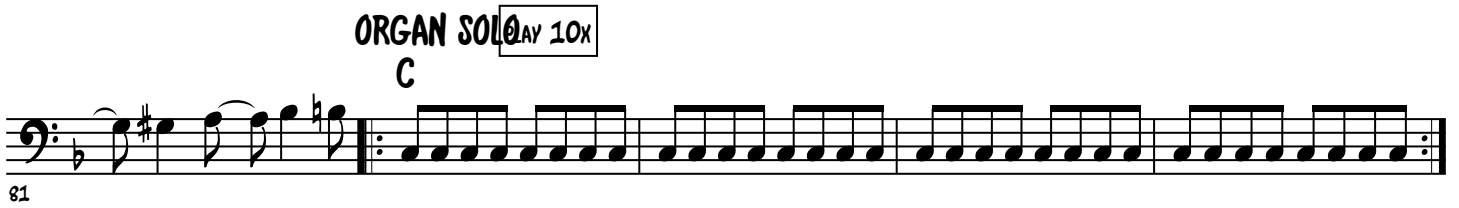
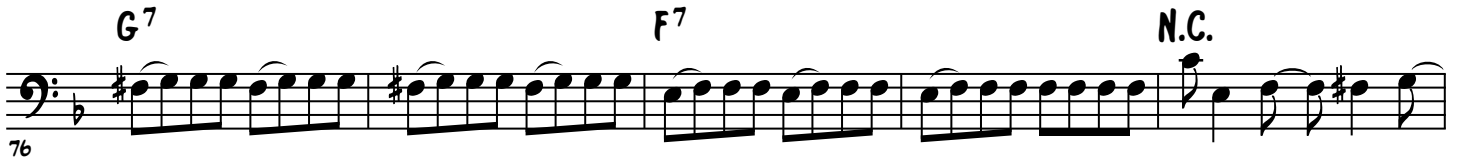
62

2. C GUITAR SOLO C⁷

66

1. 2. F⁷

KENTUCKY WOMAN - 3



KENTUCKY WOMAN - 4

109

C F C C F C C F

114

C C F C C F

118

1. C 2. C OUTRO C F G F C F

123

G F C F G F C F G F

ORGAN CADENZA GUITAR CADENZA

128