

-BLACKMORE, GILLIAN,
GLOVER, LORD, PAICE

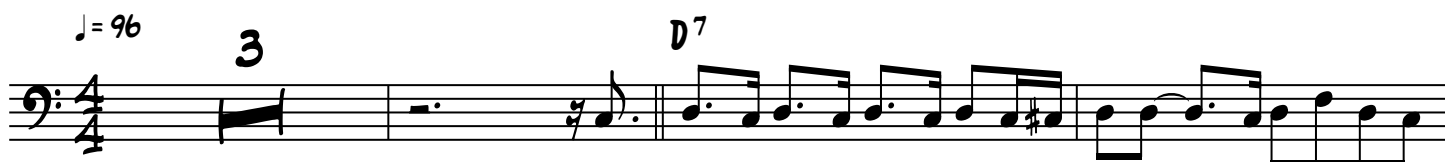
ROGER GLOVER'S BASS LINE ON

No No No

FROM DEEP PURPLE'S 1971 ALBUM

FIREBALL

VERSE



CHORUS



VERSE



No No No - 2

A⁷



D⁷



CHORUS

A⁷

E⁷

D⁷

A



GUITAR SOLO

G/A

A

G/A

A^m



PLAY 5X

A^m

A^m



VERSE

D⁷



A⁷



No No No - 3

D⁷

55

This musical staff contains measures 55, 56, and 57. Measure 55 starts with a D7 chord and features a bass line with eighth and sixteenth notes, including a sharp sign. Measure 56 continues the pattern with a flat sign. Measure 57 concludes the phrase with a final note.

CHORUS

A⁷ **E⁷**

58

This musical staff contains measures 58 and 59. Measure 58 is marked with an A7 chord and contains a double bar line. Measure 59 is marked with an E7 chord and continues the bass line with eighth and sixteenth notes.

D⁷ **A** **G/A** **A** **G/A**

61

This musical staff contains measures 60 and 61. Measure 60 is marked with a D7 chord and contains a double bar line. Measure 61 is marked with an A chord and contains a double bar line.

VERSE

D⁷

66

This musical staff contains measures 62, 63, 64, and 65. Measure 62 starts with a D7 chord and features a bass line with eighth and sixteenth notes, including a sharp sign. Measure 63 continues the pattern with a flat sign. Measure 64 and 65 conclude the phrase with a final note.

A⁷ **D⁷**

69

This musical staff contains measures 66, 67, and 68. Measure 66 is marked with an A7 chord and contains a double bar line. Measure 67 is marked with a D7 chord and continues the bass line with eighth and sixteenth notes. Measure 68 concludes the phrase with a final note.

73

This musical staff contains measures 69, 70, 71, and 72. Measure 69 starts with a D7 chord and features a bass line with eighth and sixteenth notes, including a sharp sign. Measure 70 continues the pattern with a flat sign. Measure 71 and 72 conclude the phrase with a final note.

CHORUS

A⁷ **E⁷** **D⁷** **A**

76

This musical staff contains measures 73, 74, 75, and 76. Measure 73 is marked with an A7 chord and contains a double bar line. Measure 74 is marked with an E7 chord and continues the bass line with eighth and sixteenth notes. Measure 75 is marked with a D7 chord and contains a double bar line. Measure 76 is marked with an A chord and concludes the phrase with a final note.

ORGAN SOLO

80

G/A A G/A A D A D

87

A D A D A D A

94

D A D A D A

100

D A D A D A

VERSE

106

D A 3 D⁷

113

A⁷

116

D⁷

No No No - 5

119

A⁷



CHORUS

122

E⁷ D⁷ A G/A A



VERSE

127

G/A D⁷



131

A⁷



134

D⁷



CHORUS

138

A⁷ E⁷ D⁷ A



142

G/A A G/A A⁷

