

-BOLIN, COVERDALE, PAICE

GLENN HUGHES'S BASS LINE ON

YOU KEEP ON MOVING

FROM DEEP PURPLE'S 1975 ALBUM

COME TASTE THE BAND

♩ = 80

B_M



VERSE

B_M



© 1975 WARNER BROS.

TRANSCRIBED BY ARCELLUS SYKES - WWW.SYKESTRANSSCRIPTION.COM

YOU KEEP ON MOVING- 2

VERSE **B_M**



VERSE **B_M**



CHORUS



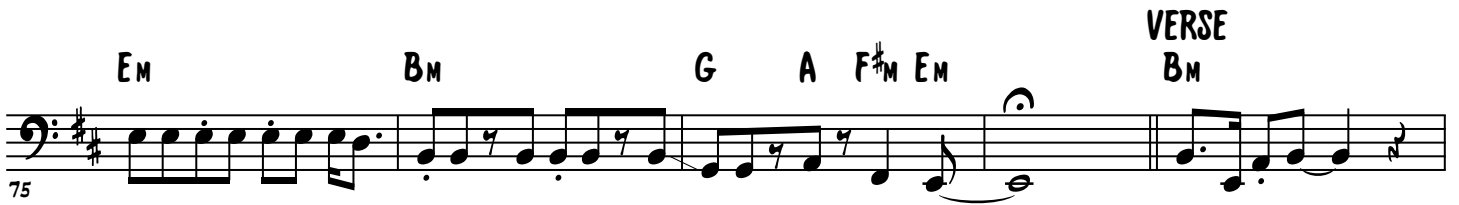
ORGAN SOLO



YOU KEEP ON MOVING- 3



CHORUS



VERSE



VERSE



GUITAR SOLO



YOU KEEP ON MOVING- 4

97

G Em

101

Bm Bm

105

G Em Bm

MOLTO RIT.