

-GILLIAN, GLOVER,
LORD, MORSE, PAICE

ROGER GLOVER'S BASS LINE ON
BLUDSUCKER

FROM DEEP PURPLE'S 1998 ALBUM

ABANDON

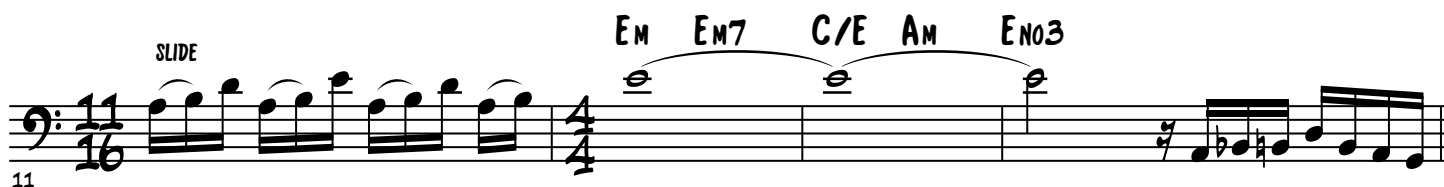
♩ = 85 N.C.



VERSE E_M



N.C.

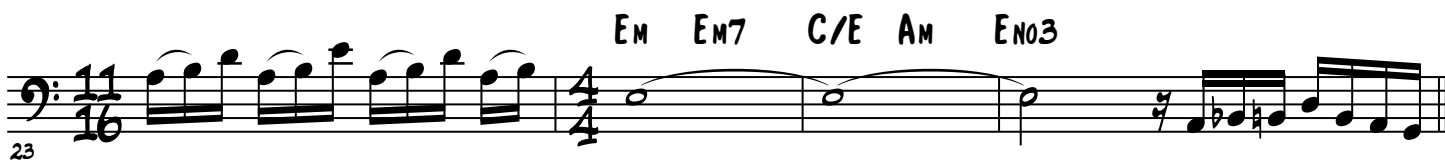


VERSE E_M



BLUDSUCKER - 2

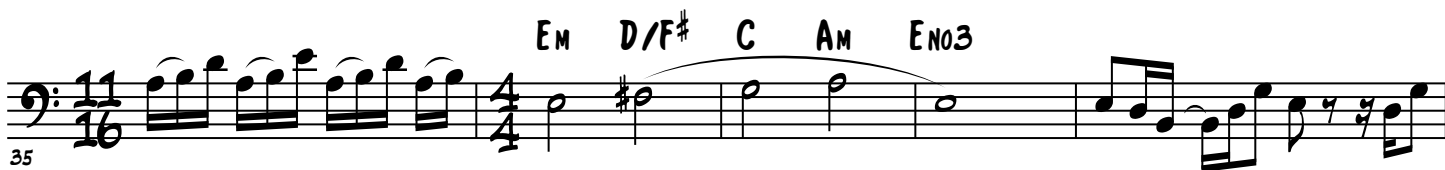
N.C.



VERSE E_m



N.C.



GUITAR SOLO



BLUDSUCKER - 3

ORGAN SOLO

Em7



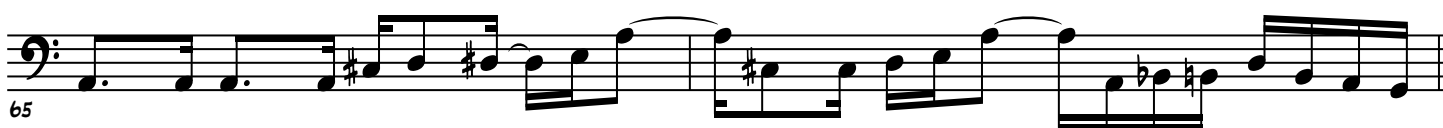
GUITAR SOLO

Em7



ORGAN SOLO

Em7



VERSE

Em



BLUDSUCKER - 4

69

Musical notation for the bass line of the first system, measures 69-72. The notation includes a bass clef, a key signature of one sharp (F#), and a 4/4 time signature. The melody consists of eighth and sixteenth notes, with a repeat sign at the end of measure 72.

OUTRO

Em

71 

73

Musical notation for the bass line of 'The Rose Tree'. The notation is on a single staff with a bass clef. It begins with a treble clef and a key signature of one sharp (F#). The melody consists of eighth and sixteenth notes, with a repeat sign at the end.

75  Musical notation for the bass line of 'The Rose Tree'. It begins with a treble clef and a key signature of one flat (B-flat). The melody starts on a quarter rest, followed by a quarter note G4, a quarter note F4, and a quarter note E4. This is followed by a quarter rest, then a quarter note D4, a quarter note C4, and a quarter note B3. The melody continues with a quarter note A3, a quarter note G3, and a quarter note F3. This is followed by a quarter rest, then a quarter note E3, a quarter note D3, and a quarter note C3. The melody ends with a quarter note B2, a quarter note A2, and a quarter note G2.