

JACK BRUCE'S BASS LINE ON STEPPIN' OUT

FROM THE 1972 ALBUM
LIVE CREAM VOLUME II

$\text{♩} = 204$ **2** $G 7(\sharp 9)$ $D 7(\sharp 9)$

GUITAR

GUITAR SOLO $G 7(\sharp 9)$

8

$C 7(\sharp 9)$

14

$G 7(\sharp 9)$ $D 7(\sharp 9)$ $C 7(\sharp 9)$ $G 7(\sharp 9)$

19

$G 7(\sharp 9)$

24

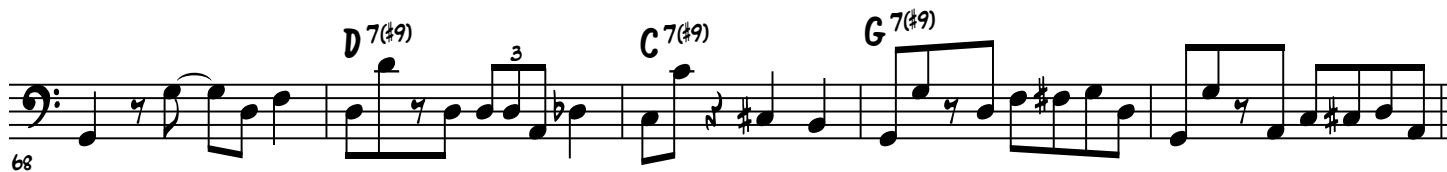
$C 7(\sharp 9)$ $G 7(\sharp 9)$ $D 7(\sharp 9)$

29 SIM.

$C 7(\sharp 9)$ $G 7(\sharp 9)$ $G 7(\sharp 9)$

34

STEPPIN' OUT - 2



STEPPIN' OUT - 3

83 **G 7(#9)** **G 7(#9)**

88 **C 7(#9)** **G 7(#9)**

93 **D 7(#9)** **C 7(#9)** **G 7(#9)** **G 7(#9)**

98 **C 7(#9)**

103 **G 7(#9)** **D 7(#9)** **C 7(#9)** **G 7(#9)**

109 **G 7(#9)** **C 7(#9)**

114 **G 7(#9)** **D 7(#9)** **C 7(#9)**

119 **G 7(#9)** **G 7(#9)**

STEPPIN' OUT - 4

124

C 7(#9) G 7(#9)

129

D 7(#9) C 7(#9) G 7(#9) G 7(#9)

134

C 7(#9)

139

G 7(#9) D 7(#9) C 7(#9) G 7(#9)

144

G 7(#9)

149

C 7(#9) G 7(#9) D 7(#9)

154

C 7(#9) G 7(#9) G 7(#9)

160

C 7(#9) G 7(#9)

STEPPIN' OUT - 5

165

D 7(#9) C 7(#9) G 7(#9) G 7(#9)

170

C 7(#9)

175

G 7(#9) D 7(#9) C 7(#9) G 7(#9)

180

G 7(#9)

185

C 7(#9) G 7(#9) D 7(#9)

190

C 7(#9) G 7(#9)

GUITAR/DRUMS CONTINUE