

RICH GRECH'S BASS LINE ON  
**SEA OF JOY**

FROM THE 1969 ALBUM  
**BLIND FAITH**

♩ = 127

INTRO

Am

D7

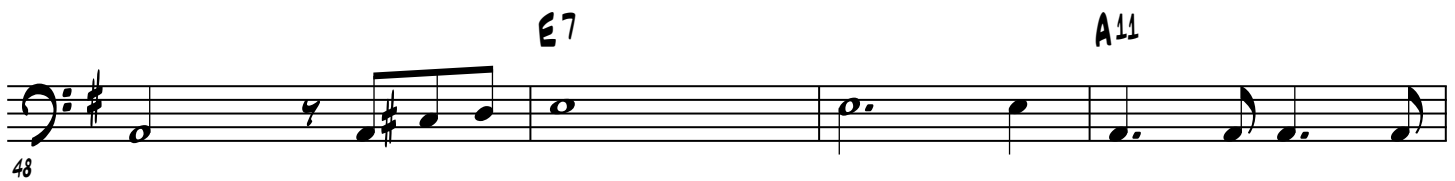
Em

BASS





## VERSE



## INTERLUDE



## SEA OF JOY

3

72

Am D7 Em

Handwritten musical notation on a single staff, measures 72-75. The key signature has one sharp (F#). The notation includes eighth and quarter notes, with a repeat sign at measure 73. Chords Am, D7, and Em are written above the staff.

76

Am D7

Handwritten musical notation on a single staff, measures 76-79. The key signature has one sharp (F#). The notation includes eighth and quarter notes. Chords Am and D7 are written above the staff.

79

Em VIOLIN SOLO A11 E7

Handwritten musical notation on a single staff, measures 79-83. The key signature has one sharp (F#). The notation includes quarter notes and a half note. Chords Em, A11, and E7 are written above the staff. The text "VIOLIN SOLO" is written above the staff.

84

A11 E7

Handwritten musical notation on a single staff, measures 84-88. The key signature has one sharp (F#). The notation includes quarter notes and a half note. Chords A11 and E7 are written above the staff.

89

A11 E7

Handwritten musical notation on a single staff, measures 89-93. The key signature has one sharp (F#). The notation includes quarter notes and a half note. Chords A11 and E7 are written above the staff.

93

A11 E7

Handwritten musical notation on a single staff, measures 93-97. The key signature has one sharp (F#). The notation includes quarter notes and a half note. Chords A11 and E7 are written above the staff.

97

A11 E7

Handwritten musical notation on a single staff, measures 97-101. The key signature has one sharp (F#). The notation includes quarter notes and a half note. Chords A11 and E7 are written above the staff.

101

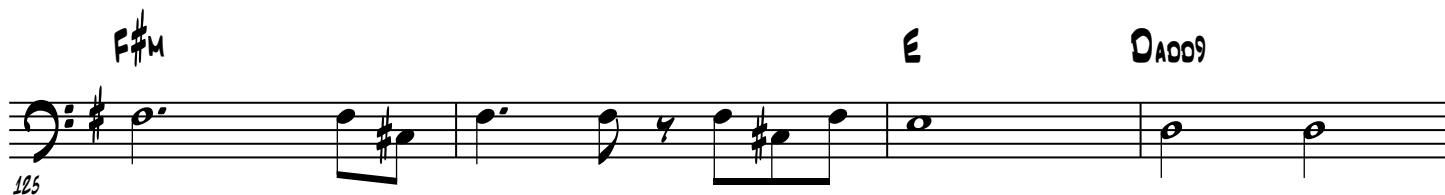
A11 E7

Handwritten musical notation on a single staff, measures 101-105. The key signature has one sharp (F#). The notation includes quarter notes and a half note. Chords A11 and E7 are written above the staff.

105

A11 E7

Handwritten musical notation on a single staff, measures 105-109. The key signature has one sharp (F#). The notation includes quarter notes and a half note. Chords A11 and E7 are written above the staff.



## SEA OF JOY

5

144

Am D7 Em

Measures 144-147: Bass clef, key of D major (F#). Measure 144: Am (A2, C3, E3), D7 (F#2, A2, C3, E3), Em (D3, F#3, A3). Measure 145: D7 (F#2, A2, C3, E3), Em (D3, F#3, A3). Measure 146: D7 (F#2, A2, C3, E3), Em (D3, F#3, A3). Measure 147: D7 (F#2, A2, C3, E3), Em (D3, F#3, A3).

148

Am D7 Em

FADE OUT....

Measures 148-151: Bass clef, key of D major (F#). Measure 148: Am (A2, C3, E3), D7 (F#2, A2, C3, E3), Em (D3, F#3, A3). Measure 149: D7 (F#2, A2, C3, E3), Em (D3, F#3, A3). Measure 150: D7 (F#2, A2, C3, E3), Em (D3, F#3, A3). Measure 151: D7 (F#2, A2, C3, E3), Em (D3, F#3, A3).

152

Am D7 Em

Measures 152-155: Bass clef, key of D major (F#). Measure 152: Am (A2, C3, E3), D7 (F#2, A2, C3, E3), Em (D3, F#3, A3). Measure 153: D7 (F#2, A2, C3, E3), Em (D3, F#3, A3). Measure 154: D7 (F#2, A2, C3, E3), Em (D3, F#3, A3). Measure 155: D7 (F#2, A2, C3, E3), Em (D3, F#3, A3).

156

Am D7

Measures 156-159: Bass clef, key of D major (F#). Measure 156: Am (A2, C3, E3), D7 (F#2, A2, C3, E3), Em (D3, F#3, A3). Measure 157: D7 (F#2, A2, C3, E3), Em (D3, F#3, A3). Measure 158: D7 (F#2, A2, C3, E3), Em (D3, F#3, A3). Measure 159: D7 (F#2, A2, C3, E3), Em (D3, F#3, A3).