

GRAHAM GOULDMAN'S BASS LINE ON

HOW DARE YOU!

E

The bass line is written on a single staff with a bass clef and a key signature of three sharps (F#, C#, G#). It begins with a treble clef and a key signature of three sharps. The melody consists of a series of eighth notes, with some measures containing beamed eighth notes. The final measure of the line shows a triplet of eighth notes.

E 6/9

F#_M/E

Musical notation for the bass line of 'The Rose Tree'. The key signature is three sharps (F#, C#, G#) and the time signature is 8/8. The notation consists of three measures. The first measure contains a half note G2, a quarter note F#2, and a half note E2. The second measure contains a quarter note D2, a quarter note C#2, a quarter note B1, and a quarter note A1. The third measure contains a quarter note G1, a quarter note F#1, a quarter note E1, and a quarter note D1. The piece ends with a double bar line.

EM/G

$$G_M/B^b$$

G/D

Musical notation for the bass line of 'The Rose Tree'. The key signature is three sharps (F#, C#, G#) and the time signature is 3/4. The melody consists of eighth and quarter notes, ending with a half note and a quarter rest.

B⁷

EM

 D_M

B⁷

14

E

 E_M
$$D_M$$

B⁷

17

The musical notation for the bass line of 'The Rose Tree' is shown on a single staff. It begins with a bass clef and a key signature of three sharps (F#, C#, G#). The melody starts on a half note G2, followed by a quarter note F#2, a quarter note E2, and a quarter note D2. There is a measure rest, followed by a quarter note C2, a quarter note B1, and a quarter note A1. The melody continues with a half note G1, a half note F#1, and a half note E1. The piece concludes with a final whole note D1.

HEAD ROOM - 2

VERSE

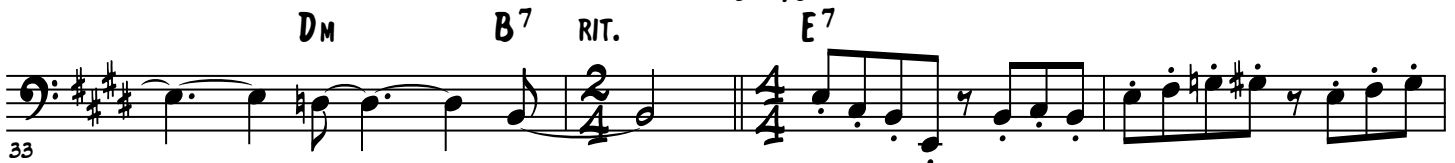
E^{6/9}



CHORUS

SLOWER

♩ = 90



VERSE

A TEMPO

E^{6/9}



HEAD ROOM - 3

47

Em/G Gm/B^b G/D

50

D[#]MAJ⁷ D MAJ⁷ D[#]MAJ⁷ D MAJ⁷ C[#]DIM⁷

BRIDGE 53

D[#]MAJ⁷ F MAJ⁷ C MAJ⁷ D[#]MAJ⁷ F MAJ⁷ C MAJ⁷

57

D[#]MAJ⁷ F MAJ⁷ C MAJ⁷ F MAJ⁷ D[#]MAJ⁷

VERSE 61

E^b/9

64

F[#]M/E

67

Em/G Gm/B^b G/D

70

B⁷ E^m D^m B⁷

HEAD ROOM - 4

E Em Dm B⁷ RIT.

73

CHORUS - REPEAT & FADE OUT

SLOWER

♩ = 90

76

80

GUITAR SOLO

83

CHORUS - REPEAT & FADE OUT

87

91