

**-ANDY POWELL/MARTIN TURNER/  
TED TURNER/STEVE UPTON**

## MARTIN TURNER'S BASS LINE ON

FROM WISHBONE ASH'S 1973 ALBUM  
*WISHBONE FOUR*

# SO MANY THINGS TO SAY

♩=117

A B $\flat$ /A C/A B $\flat$ /A A B $\flat$ /A C/A B $\flat$ /A C/A B $\flat$ /A

BASS

The bass line is written on a single staff in bass clef with a key signature of one sharp (F#). The time signature is 4/4. It begins with a 7-measure rest, followed by a double bar line and a repeat sign. The first measure contains a whole note A. The second measure contains a whole note B-flat/A. The third measure contains a whole note C/A. The fourth measure contains a whole note B-flat/A. The fifth measure contains a whole note A. The sixth measure contains a whole note B-flat/A. The seventh measure contains a whole note C/A. The eighth measure contains a whole note B-flat/A. The ninth measure contains a whole note C/A. The tenth measure contains a whole note B-flat/A. The line ends with a double bar line and a repeat sign. Above the staff, the notes A, B-flat/A, C/A, B-flat/A, A, B-flat/A, C/A, B-flat/A, C/A, and B-flat/A are written in a stylized font. Above the first C/A, there is a first ending bracket with a '1.' above it. Above the second C/A, there is a second ending bracket with a '2.' above it. The tempo is marked as ♩=117. The word 'BASS' is written to the left of the staff.

6

A B $\flat$ /A C G A B $\flat$ /A C G

VERSE

A B<sub>M</sub>/A C G A B<sub>M</sub>/A C G

1.

C G

15

VERSE

A Bm/A C G A Bm/A C G

1. C G

25

# SO MANY THINGS TO SAY - 2

## CHORUS

35

C G/B Am G D

41

C G/B Am G D C G/B Am

46

G D C G/B Am G D

## GUITAR SOLO

52

A Bm/A C G A Bm/A 1. C G

56

2. C G C G C G C G D

## VERSE

61

A Bm/A C G A Bm/A 1. C G

66

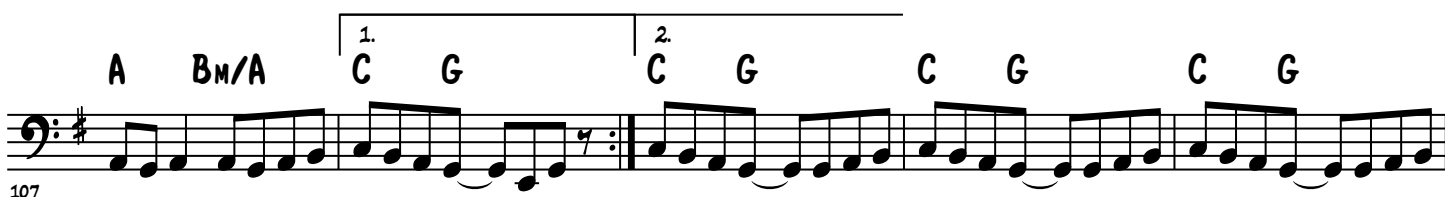
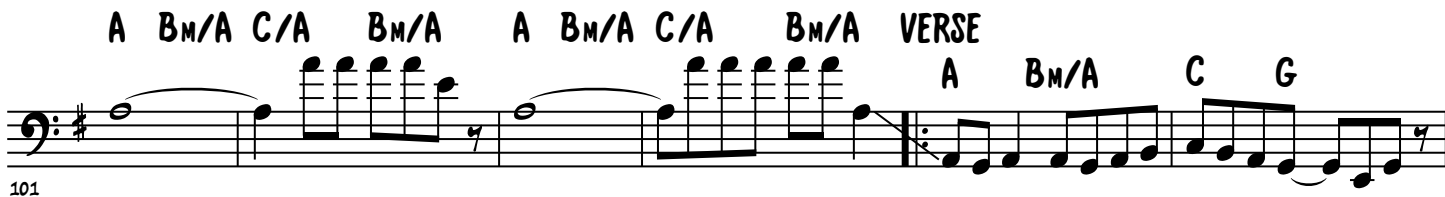
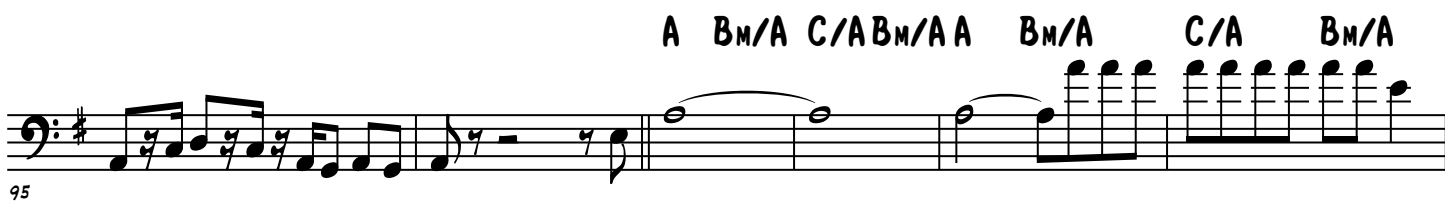
2. C G C G C G C G D

## BRIDGE

71

Am

# SO MANY THINGS TO SAY - 3



SO MANY THINGS TO SAY - 4

VERSE

112

C G D A Bm/A C G A Bm/A

118

1. C G 2. C G C G C G

122

C G D