

PAUL NEWTON'S BASS LINE ON  
**WAKE UP (SET YOUR SIGHTS)**

-BOX, BYRON

FROM URIAH HEEP'S 1970 ALBUM *VERY 'EAVY VERY 'UMBLE*

$\text{♩} = 120$

BASS GT

**FM** **GM** **A<sup>b</sup>**

**B<sup>b</sup>M** **FM** **4** **FM**

**VERSE**

**GM** **CM** **D<sup>b</sup>**

**FM** **CM**

**B<sup>b</sup>M** **F**

**FM** **GM**

**CM** **D<sup>b</sup>**

**FM** **CM**

4  
12  
17  
21  
25  
29  
33

WAKE UP (SET YOUR SIGHTS) - 2

38

B<sup>b</sup>M F F<sup>M</sup>

Musical staff 38-42 in bass clef, key of B-flat major. Staff 38 starts with a B-flat major chord (B<sup>b</sup>M) and contains eighth notes. Staff 39 continues with eighth notes and a whole note F chord. Staff 40 has a whole note F<sup>M</sup> chord. Staff 41 and 42 continue the eighth note pattern.

43

G<sup>M</sup> A<sup>b</sup> B<sup>b</sup>M F<sup>M</sup> CHORUS

Musical staff 43-46 in bass clef, key of B-flat major. Staff 43 starts with a G major chord (G<sup>M</sup>). Staff 44 has an A-flat major chord (A<sup>b</sup>). Staff 45 has a B-flat major chord (B<sup>b</sup>M). Staff 46 has an F major chord (F<sup>M</sup>) and is labeled "CHORUS".

47

E<sup>b</sup> C<sup>M</sup> D<sup>dim</sup> C F<sup>M</sup>

Musical staff 47-50 in bass clef, key of B-flat major. Staff 47 starts with an E-flat major chord (E<sup>b</sup>). Staff 48 has a C major chord (C<sup>M</sup>). Staff 49 has a D diminished chord (D<sup>dim</sup>). Staff 50 has a C major chord (C) and an F major chord (F<sup>M</sup>).

50

G<sup>M</sup> F D<sup>M</sup> E<sup>dim</sup>

Musical staff 50-52 in bass clef, key of B-flat major. Staff 50 starts with a G major chord (G<sup>M</sup>). Staff 51 has an F chord. Staff 52 has a D major chord (D<sup>M</sup>) and an E diminished chord (E<sup>dim</sup>).

53

D<sup>M</sup> G<sup>M</sup> G<sup>M</sup>

Musical staff 53-57 in bass clef, key of B-flat major. Staff 53 starts with a D major chord (D<sup>M</sup>). Staff 54 has a G major chord (G<sup>M</sup>). Staff 55 has a G major chord (G<sup>M</sup>). Staff 56 and 57 continue the eighth note pattern.

58

F<sup>M</sup> G<sup>M</sup>

Musical staff 58-61 in bass clef, key of B-flat major. Staff 58 starts with an F major chord (F<sup>M</sup>). Staff 59 has a G major chord (G<sup>M</sup>). Staff 60 and 61 continue the eighth note pattern.

62

A<sup>b</sup>M

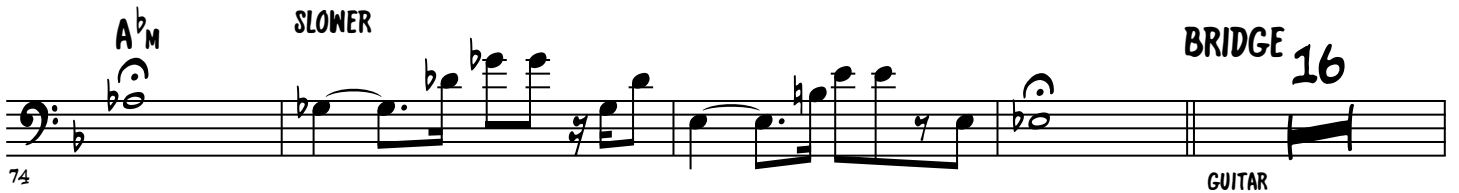
Musical staff 62-65 in bass clef, key of B-flat major. Staff 62 starts with an A-flat major chord (A<sup>b</sup>M). Staff 63, 64, and 65 continue the eighth note pattern.

66

G<sup>b</sup>M A<sup>b</sup>M

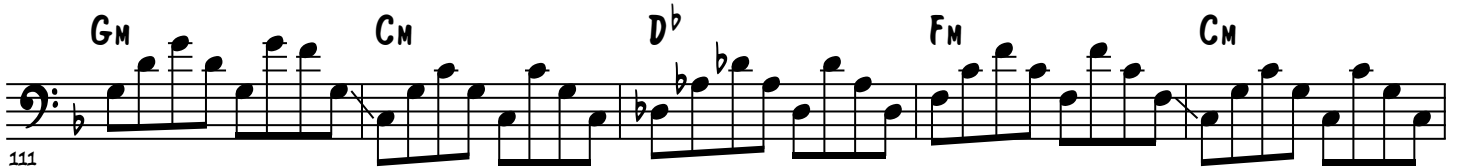
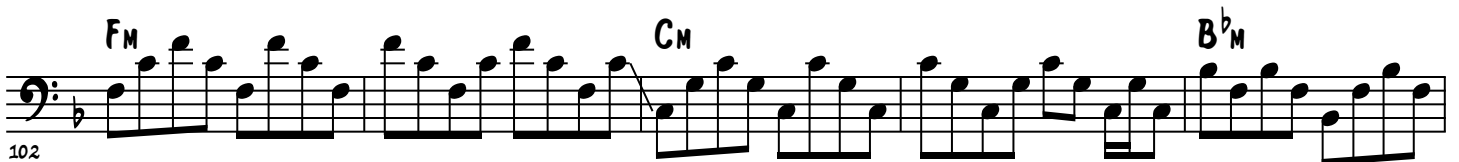
Musical staff 66-69 in bass clef, key of B-flat major. Staff 66 starts with a G-flat major chord (G<sup>b</sup>M). Staff 67 has an A-flat major chord (A<sup>b</sup>M). Staff 68 and 69 continue the eighth note pattern.

# WAKE UP (SET YOUR SIGHTS) - 3



FASTER

♩ = 78



WAKE UP (SET YOUR SIGHTS) - 4

120

C<sub>M</sub> D<sup>b</sup> F<sub>M</sub> C<sub>M</sub>

This musical staff contains measures 120 through 123. It is written in bass clef with a key signature of one flat (B-flat). The melody consists of eighth and quarter notes. Chord changes are indicated above the staff: C<sub>M</sub> for measures 120-121, D<sup>b</sup> for measure 122, F<sub>M</sub> for measure 123, and C<sub>M</sub> for measure 124 (which is the start of the next staff).

124

B<sup>b</sup><sub>M</sub> F<sub>M</sub> OUTRO F<sub>M</sub>

This musical staff contains measures 124 through 127. It continues the melody from the previous staff. Chord changes are indicated: B<sup>b</sup><sub>M</sub> for measures 124-125, F<sub>M</sub> for measure 126, and F<sub>M</sub> for measure 127. The word "OUTRO" is written above the staff between measures 126 and 127. The staff ends with a double bar line.

128

G<sub>M</sub> C<sub>M</sub>

This musical staff contains measures 128 through 131. The melody continues with eighth and quarter notes. Chord changes are indicated: G<sub>M</sub> for measures 128-130 and C<sub>M</sub> for measure 131. The staff ends with a double bar line.

132

D<sup>b</sup> F<sub>M</sub>

This musical staff contains measures 132 through 135. The melody continues. Chord changes are indicated: D<sup>b</sup> for measures 132-133 and F<sub>M</sub> for measures 134-135. The staff ends with a double bar line.

136

C<sub>M</sub> B<sup>b</sup><sub>M</sub> F<sub>M</sub>

This musical staff contains measures 136 through 139. The melody continues. Chord changes are indicated: C<sub>M</sub> for measures 136-137, B<sup>b</sup><sub>M</sub> for measures 138-139, and F<sub>M</sub> for measure 140. The staff ends with a double bar line.