

FELIX PAPPALARDO'S BASS LINE ON
MY LADY

FROM MOUNTAIN'S 1971 ALBUM
NANTUCKET SLEIGHRIDE

♩ = 142

INTRO

BASS

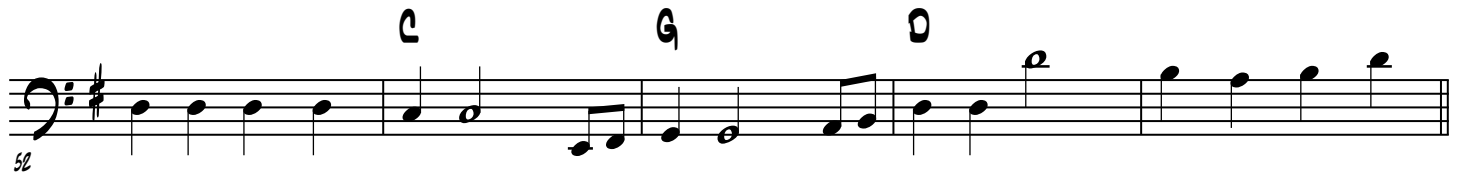
The Intro consists of 11 measures. The key signature is one sharp (F#), and the time signature is 4/4. The bass line is written in a single staff. Chords are indicated above the staff: C (measures 1-2), Gm (measure 3), D (measures 4-5), C (measures 6-7), Gm (measures 8-9), and D (measures 10-11). The bass line features a mix of eighth and sixteenth notes, with some measures containing rests.

VERSE 1

Verse 1 consists of 16 measures. The key signature is one sharp (F#), and the time signature is 4/4. The bass line is written in a single staff. Chords are indicated above the staff: A (measures 1-2), G (measures 3-4), D (measures 5-6), A (measures 7-8), G (measures 9-10), D (measures 11-12), C (measures 13-14), and G (measures 15-16). The bass line features a mix of eighth and sixteenth notes, with some measures containing rests.

VERSE 2

Verse 2 consists of 4 measures. The key signature is one sharp (F#), and the time signature is 4/4. The bass line is written in a single staff. Chords are indicated above the staff: A (measures 1-2), G (measures 3-4). The bass line features a mix of eighth and sixteenth notes, with some measures containing rests.



MY LADY

3

VERSE 3

A

G

D

A

86

A

G

D

A

91

G

D

C

96

D

C

G

D

101

VERSE 4

A

G

D

106

A

G

D

A

111

G

D

C

G

116

D

C

G

D

121

CHORUS

D

G

126

