

THE WHISTLER



VERSE 7



VOCAL ENTERS

CHORUS 10



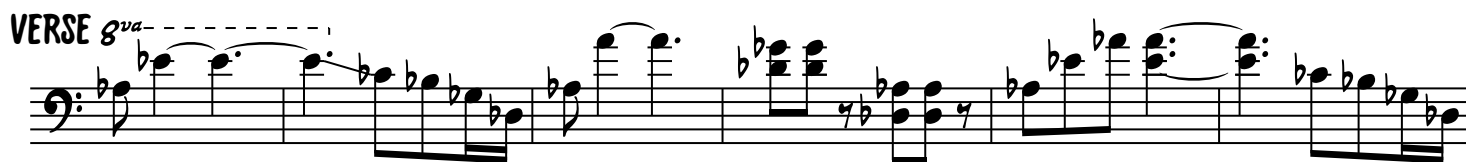
22



36



40



45

CHORUS



51



56



61



66



71



74

VERSE

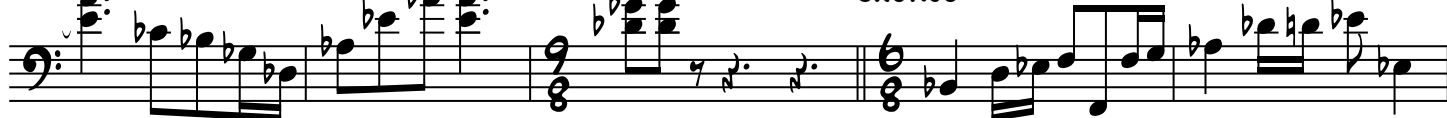


78



84

CHORUS



89



94



99



105

The bass line of 'The Rose Tree' is written in 3/4 time on a single staff. It begins with a treble clef and a key signature of one flat (B-flat). The melody consists of eighth and sixteenth notes, with some measures containing triplets. The final measure of the line shows a double bar line and a repeat sign.

109

A musical score for the bass line of the song 'The Rose Tree'. The notation is on a single staff with a bass clef. It consists of six measures of music. The first measure contains a whole note chord (F2, A1, C2). The second measure contains a half note chord (F2, A1, C2) followed by a quarter note (F2). The third measure contains a half note chord (F2, A1, C2) followed by a quarter note (F2). The fourth measure contains a half note chord (F2, A1, C2) followed by a quarter note (F2). The fifth measure contains a half note chord (F2, A1, C2) followed by a quarter note (F2). The sixth measure contains a half note chord (F2, A1, C2) followed by a quarter note (F2). The notes are written in a simplified, stylized manner, with some notes appearing as single stems or dots.

113

Musical notation for the bass line of 'The Rose Tree'. The notation is written on a single staff with a bass clef. It consists of a series of eighth and sixteenth notes, with some rests, representing the melody of the song.

118