



SHE HAS FUNNY CARS


BASS GT. 
 GUITAR ENTERS

VERSE
 
 VOCAL ENTERS

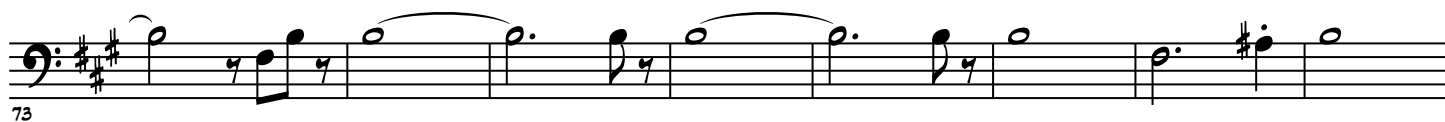
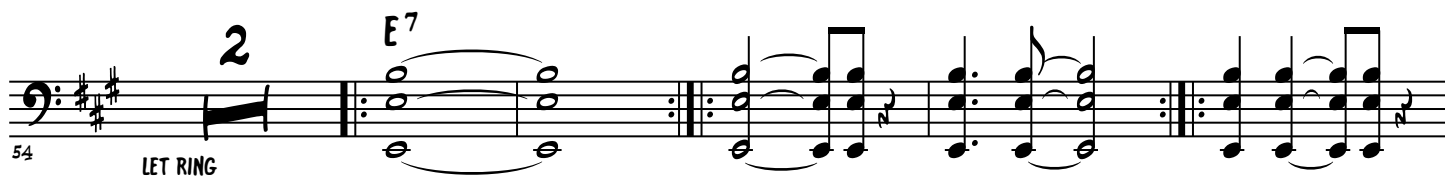

 1.


 2.

BRIDGE
 
 B MIN


 B MIN


 43



SHE HAS FUNNY CARS

3

97

2

LET RING

OUTRO

B MIN

104

109

114

FADE OUT..

119

124