

GREG RIDLEY'S BASS LINE ON
THE FIXER

FROM THE 1972 HUMBLE PIE ALBUM
SMOKIN'

♩ = 115

INTRO

A 7(#9)

BASS



VERSE

A 7(#9)



INTERLUDE
A 7(#9)



VERSE
A 7(#9)



A 7(#9)



THE FIXER

BRIDGE



INTERLUDE

A 7(#9)



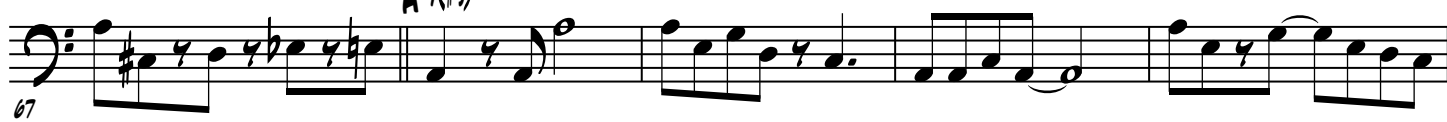
VERSE

A 7(#9)



INTERLUDE

A 7(#9)



GT. SOLO

A 7(#9)





