

BROAD DAYLIGHT

CHORUS

♩ = 124

BASS GT.

B

A **E** **B**

A **E** **B**

A **E** **B**

5 LET RING

VERSE

B **A** **E** **F#**

VOCAL ENTERS

C#MIN **F#** **B** **A** **E**

11

19

CHORUS

A **E** **B**

A **E** **B**

A **E** **B**

26

32 LET RING

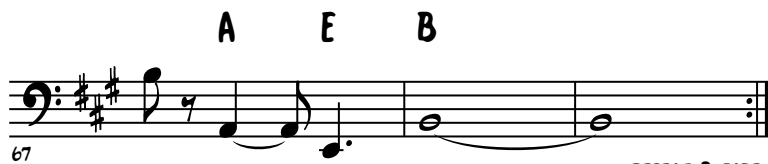
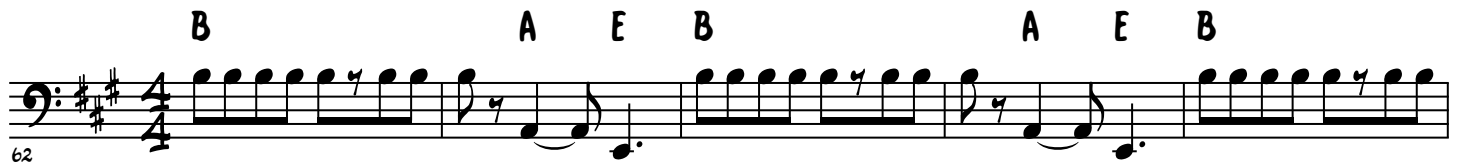
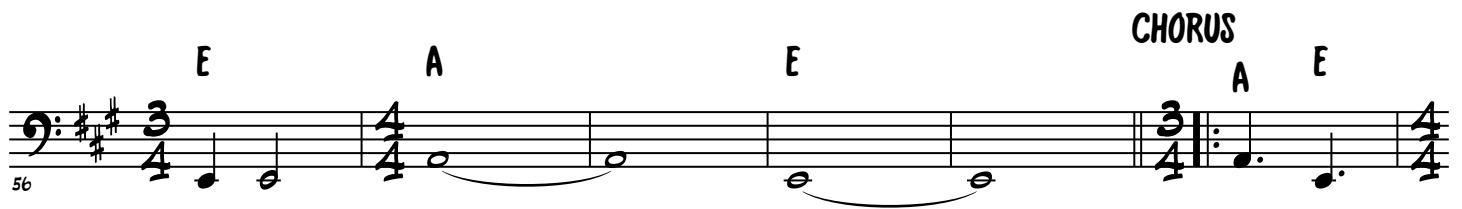
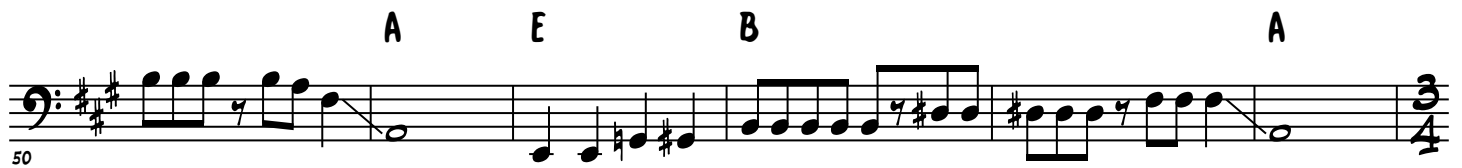
GUITAR SOLO

B **A** **E** **B**

38

45

BROAD DAYLIGHT



REPEAT & FADE..