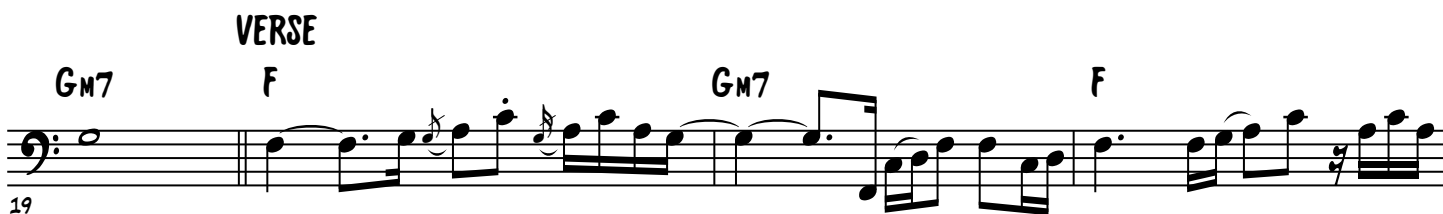
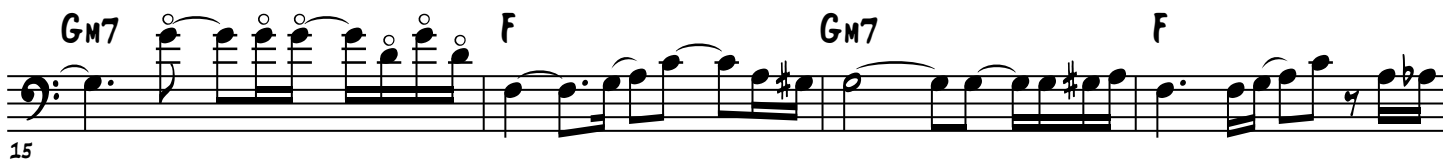
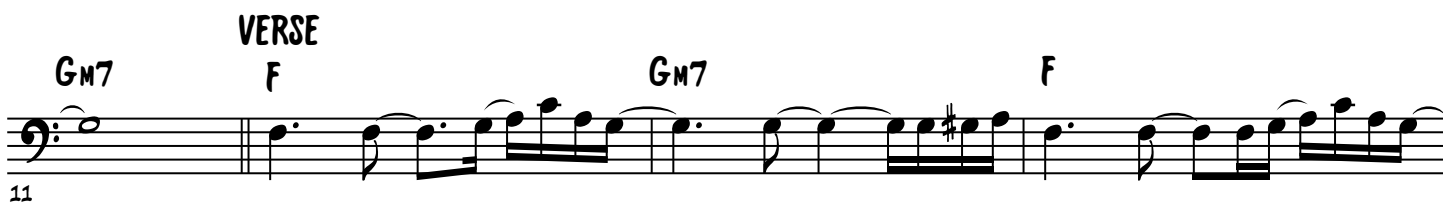
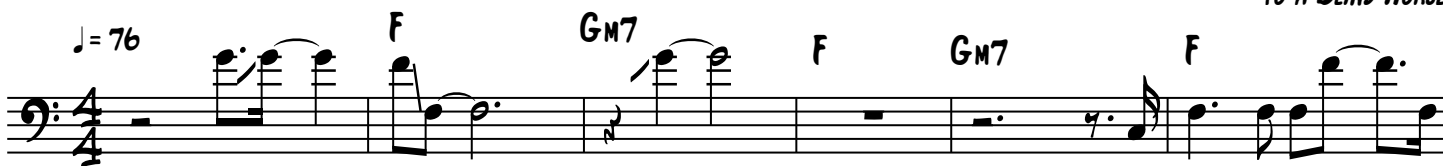


# DEBRIS

FROM FACES' 1971 ALBUM  
*A NOD IS AS GOOD AS A WINK...  
TO A BLIND HORSE*



# DEBRIS - 2

31

F Dm Am Gm

35

VERSE

F Gm7 F Gm7

39

F Gm7 F

42

Gm7 F Gm7 F

GUITAR SOLO

46

Gm7 F Gm7 F

50

Gm7 F Gm7 F

54

Gm7 F Gm7

BRIDGE

Dm

58

Am Gm F Dm

# DEBRIS - 3

Am GM F GM7

62

This musical staff contains measures 62 through 65. The key signature has one flat (Bb). Measure 62 starts with an Am chord and a half note Bb. Measure 63 has a GM chord and a half note D. Measure 64 has an F chord and a half note F. Measure 65 has a GM7 chord and a half note G. The melody consists of eighth and sixteenth notes, often beamed together.

## VERSE

F GM7 F GM7

66

This musical staff contains measures 66 through 69. Measure 66 starts with an F chord and a half note Bb. Measure 67 has a GM7 chord and a half note D. Measure 68 has an F chord and a half note F. Measure 69 has a GM7 chord and a half note G. The melody continues with eighth and sixteenth notes.

F GM7 F GM7 OUTRO F7

70

This musical staff contains measures 70 through 74. Measure 70 starts with an F chord and a half note Bb. Measure 71 has a GM7 chord and a half note D. Measure 72 has an F chord and a half note F. Measure 73 has a GM7 chord and a half note G. Measure 74 is the start of the OUTRO section with an F7 chord and a half note Bb. The melody continues with eighth and sixteenth notes.

75

This musical staff contains measures 75 through 78. The melody continues with eighth and sixteenth notes, maintaining the same rhythmic pattern.

79

This musical staff contains measures 79 through 82. The melody continues with eighth and sixteenth notes.

FADE OUT

83

This musical staff contains measures 83 through 86. The melody continues with eighth and sixteenth notes, ending with a double bar line.