

-BLACKMORE, COVERDALE

GLENN HUGHES'S BASS LINE ON

SAIL AWAY

FROM DEEP PURPLE'S 1974 ALBUM

BURN

♩ = 94

4

Em

The first staff of music is in 4/4 time, with a tempo of 94 beats per minute. It begins with a 4-measure rest, followed by a series of eighth-note patterns. The key signature is one flat (B minor/E major), and the time signature is 4/4. The staff is labeled with a '4' and an 'Em' chord.

VERSE

PLAY 4X

Em

The first staff of the verse begins with a repeat sign and a 4-measure rest, followed by eighth-note patterns. The staff is labeled with an 'Em' chord.

CHORUS

B A

G Bm A G Am Em

The second staff of the verse continues the eighth-note patterns. The staff is labeled with chords: G, Bm, A, G, Am, and Em.

Am Em Am Em

The third staff of the verse continues the eighth-note patterns. The staff is labeled with chords: Am, Em, Am, and Em.

G A B

The fourth staff of the verse continues the eighth-note patterns. The staff is labeled with chords: G, A, and B.

Em

The fifth staff of the verse continues the eighth-note patterns. The staff is labeled with an 'Em' chord.

VERSE

PLAY 4X

Em

The first staff of the second verse begins with a repeat sign and a 4-measure rest, followed by eighth-note patterns. The staff is labeled with an 'Em' chord.

CHORUS

B A

SAIL AWAY - 2

37

G B \mathbb{M} A G A \mathbb{M} E \mathbb{M}

42

A \mathbb{M} E \mathbb{M} A \mathbb{M} E \mathbb{M}

46

G A B

INTERLUDE

50

E \mathbb{M}

54

B A G B \mathbb{M} A G

CHORUS

59

A \mathbb{M} E \mathbb{M} A \mathbb{M} E \mathbb{M}

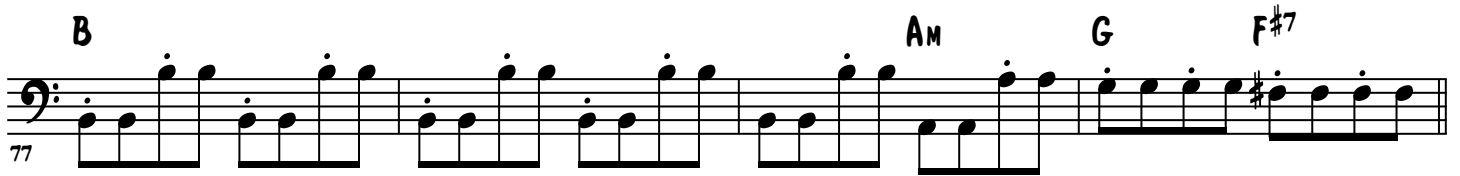
63

A \mathbb{M} E \mathbb{M} G A B

67

A \mathbb{M}

SAIL AWAY - 3



INTERLUDE REPEAT (8X) & FADE OUT

