

JACK BRUCE'S BASS LINE ON

FROM BBM'S 1994 ALBUM

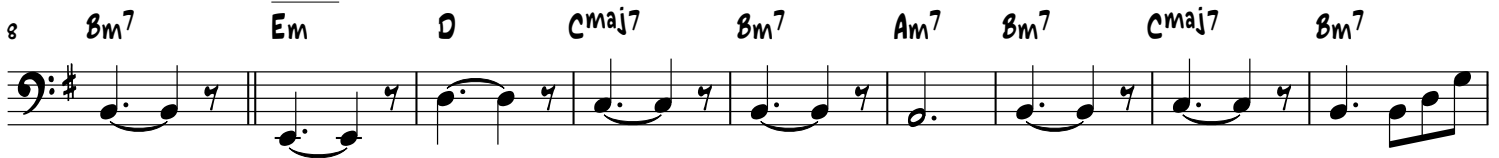
AROUND THE NEXT DREAM

WHY DOES LOVE (HAVE TO GO WRONG)

♩ = 130



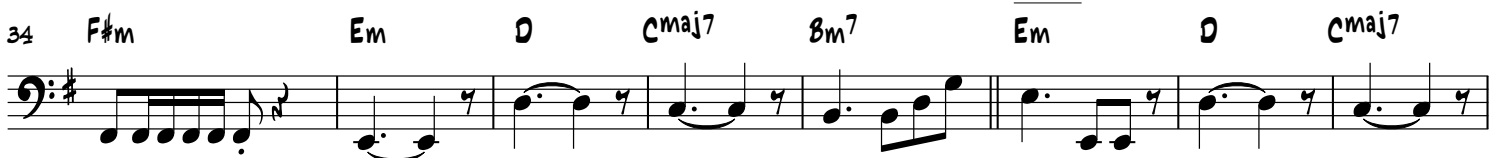
VERSE



CHORUS



VERSE



WHY DOES LOVE (HAVE TO GO WRONG) - 2

51 Am⁷ Bm⁷ Cmaj⁷ Bm⁷ Am C

CHORUS

57 Am C C#m G#m F#m G#m C#m G#m

62 F#m G#m C# G#m F#m A B

GUITAR SOLO

66 C# G A G A

72 G A G A G

77 A G A G

81 A G A Em D Cmaj⁷

VERSE

87 Bm⁷ Em D Cmaj⁷ Bm⁷ Am⁷ Bm⁷ Cmaj⁷

WHY DOES LOVE (HAVE TO GO WRONG) - 3

95 Bm⁷ Em D Cmaj⁷ Bm⁷ Am⁷ Bm⁷ Cmaj⁷

Bass line for measures 95-102. The key signature has one sharp (F#). The notes are: 95: B2, D3, F#3; 96: B2, D3, F#3; 97: B2, D3, F#3; 98: B2, D3, F#3; 99: B2, D3, F#3; 100: B2, D3, F#3; 101: B2, D3, F#3; 102: B2, D3, F#3.

103 Bm⁷ Am C Am C

Bass line for measures 103-108. The key signature has one sharp (F#). The notes are: 103: B2, D3, F#3; 104: B2, D3, F#3; 105: B2, D3, F#3; 106: B2, D3, F#3; 107: B2, D3, F#3; 108: B2, D3, F#3.

CHORUS

108 C#m G#m F#m G#m C#m G#m F#m G#m C# G#m

Bass line for measures 108-112. The key signature has two sharps (F# and C#). The notes are: 108: C#2, E3, G#3; 109: C#2, E3, G#3; 110: C#2, E3, G#3; 111: C#2, E3, G#3; 112: C#2, E3, G#3.

113 F#m A B C#

Bass line for measures 113-117. The key signature has two sharps (F# and C#). The notes are: 113: F#2, A3, C#3; 114: F#2, A3, C#3; 115: F#2, A3, C#3; 116: F#2, A3, C#3; 117: F#2, A3, C#3.

GUITAR SOLO

117 G A G A G

Bass line for measures 117-121. The key signature has one sharp (F#). The notes are: 117: G2, B2, D3; 118: G2, B2, D3; 119: G2, B2, D3; 120: G2, B2, D3; 121: G2, B2, D3.

122 A G A G

Bass line for measures 122-125. The key signature has one sharp (F#). The notes are: 122: A2, C#3, E3; 123: A2, C#3, E3; 124: A2, C#3, E3; 125: A2, C#3, E3.

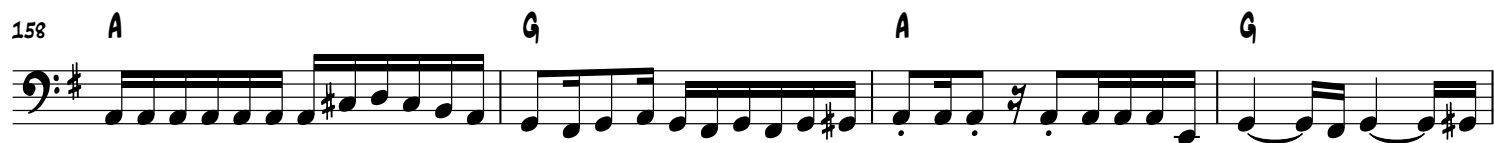
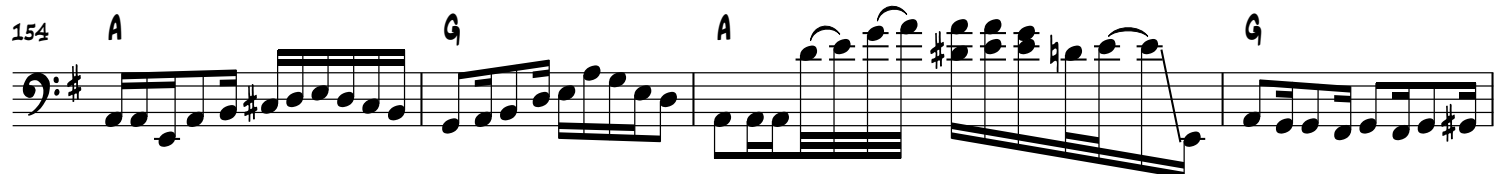
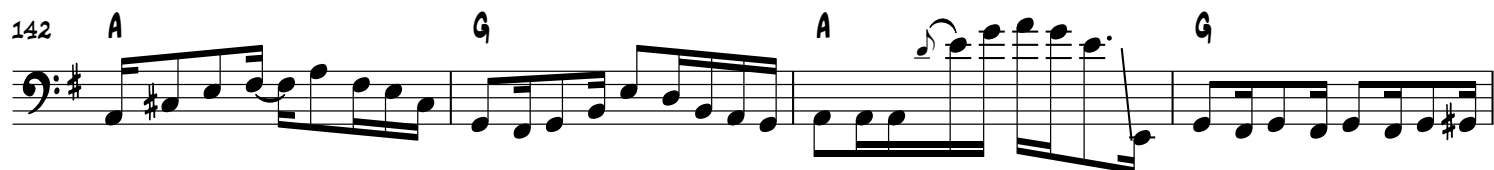
126 A G A G

Bass line for measures 126-129. The key signature has one sharp (F#). The notes are: 126: A2, C#3, E3; 127: A2, C#3, E3; 128: A2, C#3, E3; 129: A2, C#3, E3.

130 A G A G

Bass line for measures 130-133. The key signature has one sharp (F#). The notes are: 130: A2, C#3, E3; 131: A2, C#3, E3; 132: A2, C#3, E3; 133: A2, C#3, E3.

WHY DOES LOVE (HAVE TO GO WRONG) - 4



WHY DOES LOVE (HAVE TO GO WRONG) - 5

166 A G A G

170 A G A G A

175 G A G A

179 G A G

182 A G A